

# ATG12 Rabbit mAb

Catalog No.: A22788 **Recombinant**

## Basic Information

### Observed MW

40kDa

### Calculated MW

15kDa

### Category

Primary antibody

### Applications

WB,IHC-P,IP,ELISA

### Cross-Reactivity

Human, Mouse

### CloneNo number

ARC2663

## Background

Autophagy is a process of bulk protein degradation in which cytoplasmic components, including organelles, are enclosed in double-membrane structures called autophagosomes and delivered to lysosomes or vacuoles for degradation. ATG12 is the human homolog of a yeast protein involved in autophagy (Mizushima et al., 1998 [PubMed 9852036]).

## Recommended Dilutions

**WB** 1:500 - 1:1000

**IHC-P** 1:50 - 1:200

**IP** 0.5µg-4µg antibody for  
200µg-400µg extracts of  
whole cells

**ELISA** Recommended starting  
concentration is 1 µg/mL.  
Please optimize the  
concentration based on  
your specific assay  
requirements.

## Immunogen Information

### Gene ID

9140

### Swiss Prot

O94817

### Immunogen

Synthetic peptide. This information is considered to be commercially sensitive.

### Synonyms

APG12; FBR93; APG12L; HAPG12; ATG12

## Contact

☎ | 400-999-6126

✉ | [cn.market@abclonal.com.cn](mailto:cn.market@abclonal.com.cn)

🌐 | [www.abclonal.com.cn](http://www.abclonal.com.cn)

## Product Information

### Source

Rabbit

### Isotype

IgG

### Purification

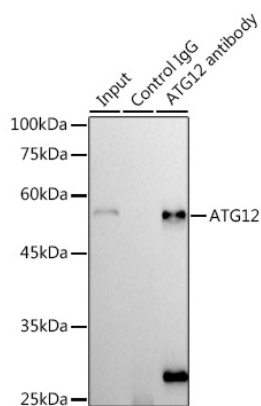
Affinity purification

### Storage

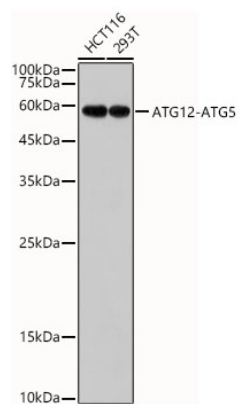
Store at -20°C. Avoid freeze / thaw cycles.

Buffer: PBS with 0.02% sodium azide,0.05% BSA,50% glycerol,pH7.3.

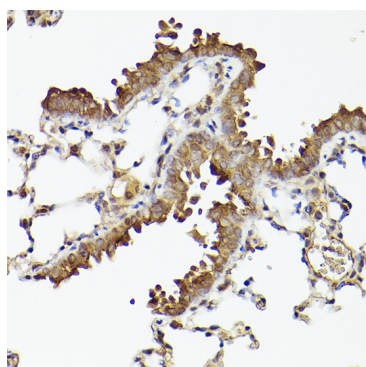
## Validation Data



Immunoprecipitation analysis of 300 µg extracts of 293T cells using 3 µg ATG12 antibody (A22788). Western blot was performed from the immunoprecipitate using ATG12 antibody (A22788) at a dilution of 1:500.



Western blot analysis of various lysates, using ATG12 Rabbit mAb (A22788) at 1:1000 dilution. Secondary antibody: HRP-conjugated Goat anti-Rabbit IgG (H+L) (AS014) at 1:10000 dilution. Lysates/proteins: 25µg per lane. Blocking buffer: 3% nonfat dry milk in TBST. Detection: ECL Basic Kit (RM00020). Exposure time: 180s.



Immunohistochemistry analysis of paraffin-embedded Mouse lung using ATG12 Rabbit mAb (A22788) at dilution of 1:100 (40x lens). High pressure antigen retrieval performed with 0.01M Citrate buffer (pH 6.0) prior to IHC staining.