

# ABF1 Rabbit pAb

Catalog No.: A22789

## Basic Information

### Observed MW

### Calculated MW

39kDa

### Category

Primary antibody

### Applications

WB, ELISA

### Cross-Reactivity

Arabidopsis thaliana

## Background

Identified as a protein that binds to abscisic acid response elements. May mediate transcriptional regulation of ABA responses.

## Recommended Dilutions

**WB** 1:500 - 1:1000

**ELISA** Recommended starting concentration is 1 µg/mL. Please optimize the concentration based on your specific assay requirements.

## Immunogen Information

### Gene ID

841395

### Swiss Prot

Q8L3W1

### Immunogen

Recombinant protein (or fragment). This information is considered to be commercially sensitive.

### Synonyms

abscisic acid responsive element-binding factor 1; AtABF1; F14J22.7; F14J22\_7; ABF1

## Contact

☎ | 400-999-6126

✉ | [cn.market@abclonal.com.cn](mailto:cn.market@abclonal.com.cn)

🌐 | [www.abclonal.com.cn](http://www.abclonal.com.cn)

## Product Information

### Source

Rabbit

### Isotype

IgG

### Purification

Affinity purification

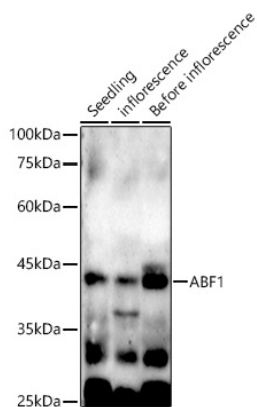
### Storage

Store at -20°C. Avoid freeze / thaw cycles.

Buffer: PBS containing 50% glycerol, preserved with proclin300 or sodium azide (as specified on the Certificate of Analysis), pH 7.3.

## Validation Data

---



Western blot analysis of various tissues from *Arabidopsis thaliana*, using ABF1 Rabbit pAb (A22789) at 1:600 dilution.

Secondary antibody: HRP-conjugated Goat anti-Rabbit IgG (H+L) (AS014) at 1:10000 dilution.

Lysates/proteins: 25µg per lane.

Blocking buffer: 3% nonfat dry milk in TBST.

Detection: ECL Basic Kit (RM00020).

Exposure time: 180s.