

FITC Mouse anti-Human CD1a mAb

Catalog No.: A22790

Basic Information

Observed MW

Refer to figures

Calculated MW

37kDa

Category

Primary antibody

Applications

FC

Cross-Reactivity

Human

CloneNo number

AMC0532

Conjugate

FITC. Ex:491nm. Em:516nm.

Recommended Dilutions

FC 10 μ L/Test

Background

This gene encodes a member of the CD1 family of transmembrane glycoproteins, which are structurally related to the major histocompatibility complex (MHC) proteins and form heterodimers with beta-2-microglobulin. The CD1 proteins mediate the presentation of primarily lipid and glycolipid antigens of self or microbial origin to T cells. The human genome contains five CD1 family genes organized in a cluster on chromosome 1. The CD1 family members are thought to differ in their cellular localization and specificity for particular lipid ligands. The protein encoded by this gene localizes to the plasma membrane and to recycling vesicles of the early endocytic system. Alternative splicing results in multiple transcript variants.

Immunogen Information

Gene ID

909

Swiss Prot

P06126

Immunogen

Recombinant protein of human CD1a.

Synonyms

R4; T6; CD1; FCB6; HTA1

Contact

☎ | 400-999-6126

✉ | cn.market@abclonal.com.cn

🌐 | www.abclonal.com.cn

Product Information

Source

Mouse

Isotype

IgG1

Purification

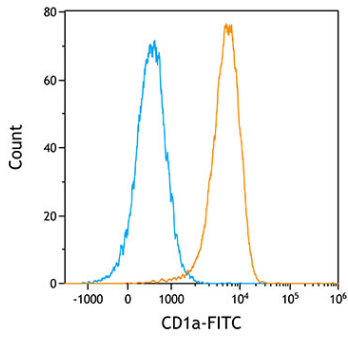
Affinity purification

Storage

Store at 4°C. Avoid freeze / thaw cycles.

Buffer: PBS with 0.1% Proclin300,0.2% BSA,pH7.2.

Validation Data



Flow cytometry: 1×10^6 Human PBMC were surface-stained with FITC Mouse anti-Human CD1a mAb (A22790, orange line) or FITC Mouse IgG1 isotype control mAb (A22877, blue line).