

FITC Mouse anti-Human CD3 mAb

Catalog No.: A22794

Basic Information

Observed MW

Refer to figures

Calculated MW

23kDa

Category

Primary antibody

Applications

FC

Cross-Reactivity

Human

CloneNo number

AMC0533

Conjugate

FITC. Ex:491nm. Em:516nm.

Recommended Dilutions

FC 10 µL/Test

Background

The protein encoded by this gene is the CD3-epsilon polypeptide, which together with CD3-gamma, -delta and -zeta, and the T-cell receptor alpha/beta and gamma/delta heterodimers, forms the T-cell receptor-CD3 complex. This complex plays an important role in coupling antigen recognition to several intracellular signal-transduction pathways. The genes encoding the epsilon, gamma and delta polypeptides are located in the same cluster on chromosome 11. The epsilon polypeptide plays an essential role in T-cell development. Defects in this gene cause immunodeficiency. This gene has also been linked to a susceptibility to type I diabetes in women.

Immunogen Information

Gene ID

916

Swiss Prot

P07766

Immunogen

Recombinant protein (or fragment). This information is considered to be commercially sensitive.

Synonyms

T3E; TCRE; IMD18; CD3epsilon

Contact

☎ | 400-999-6126

✉ | cn.market@abclonal.com.cn

🌐 | www.abclonal.com.cn

Product Information

Source

Mouse

Isotype

IgG1

Purification

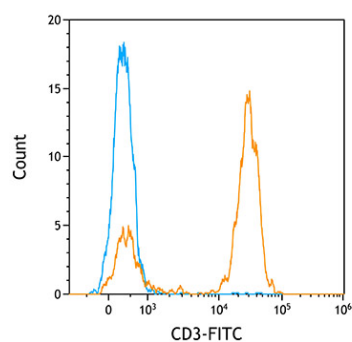
Affinity purification

Storage

Store at 4°C. Avoid freeze / thaw cycles.

Buffer: PBS with 0.1% Proclin300, 0.2% BSA, pH7.2.

Validation Data



Flow cytometry: 1X10⁶ Human PBMC were surface-stained with FITC Mouse anti-Human CD3 mAb (A22794, orange line) or FITC Mouse IgG1 isotype control mAb (A22877, blue line).