

# FITC Mouse anti-Human CD11b mAb

Catalog No.: A22808

## Basic Information

### Observed MW

Refer to figures

### Calculated MW

127kDa

### Category

Primary antibody

### Applications

FC

### Cross-Reactivity

Human

### CloneNo number

AMC0537

### Conjugate

FITC. Ex:491nm. Em:516nm.

## Recommended Dilutions

FC 10  $\mu$ L/Test

## Background

This gene encodes the integrin alpha M chain. Integrins are heterodimeric integral membrane proteins composed of an alpha chain and a beta chain. This I-domain containing alpha integrin combines with the beta 2 chain (ITGB2) to form a leukocyte-specific integrin referred to as macrophage receptor 1 ('Mac-1'), or inactivated-C3b (iC3b) receptor 3 ('CR3'). The alpha M beta 2 integrin is important in the adherence of neutrophils and monocytes to stimulated endothelium, and also in the phagocytosis of complement coated particles. Multiple transcript variants encoding different isoforms have been found for this gene.

## Immunogen Information

### Gene ID

3684

### Swiss Prot

P11215

### Immunogen

Recombinant protein of human CD11b.

### Synonyms

CR3A; MO1A; CD11B; MAC-1; MAC1A; SLEB6

## Contact

 | 400-999-6126

 | [cn.market@abclonal.com.cn](mailto:cn.market@abclonal.com.cn)

 | [www.abclonal.com.cn](http://www.abclonal.com.cn)

## Product Information

### Source

Mouse

### Isotype

IgG2b

### Purification

Affinity purification

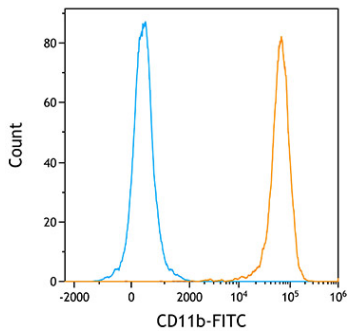
### Storage

Store at 4°C. Avoid freeze / thaw cycles.

Buffer: PBS with 0.1% Proclin300,0.2% BSA,pH7.2.

## Validation Data

---



Flow cytometry:  $1 \times 10^6$  Human PBMC were surface-stained with FITC Mouse anti-Human CD11b mAb (A22808, orange line) or FITC Mouse IgG2b isotype control mAb (A22883, blue line).