

APC Mouse anti-Human CD11b mAb

Catalog No.: A22811

Basic Information

Observed MW

Refer to figures

Calculated MW

127kDa

Category

Primary antibody

Applications

FC

Cross-Reactivity

Human

CloneNo number

AMC0537

Conjugate

APC. Ex:650nm. Em:660nm.

Recommended Dilutions

FC 10 µL/Test

Background

This gene encodes the integrin alpha M chain. Integrins are heterodimeric integral membrane proteins composed of an alpha chain and a beta chain. This I-domain containing alpha integrin combines with the beta 2 chain (ITGB2) to form a leukocyte-specific integrin referred to as macrophage receptor 1 ('Mac-1'), or inactivated-C3b (iC3b) receptor 3 ('CR3'). The alpha M beta 2 integrin is important in the adherence of neutrophils and monocytes to stimulated endothelium, and also in the phagocytosis of complement coated particles. Multiple transcript variants encoding different isoforms have been found for this gene.

Immunogen Information

Gene ID

3684

Swiss Prot

P11215

Immunogen

Recombinant protein (or fragment). This information is considered to be commercially sensitive.

Synonyms

CR3A; MO1A; CD11B; MAC-1; MAC1A; SLEB6

Contact

☎ | 400-999-6126

✉ | cn.market@abclonal.com.cn

🌐 | www.abclonal.com.cn

Product Information

Source

Mouse

Isotype

IgG2b

Purification

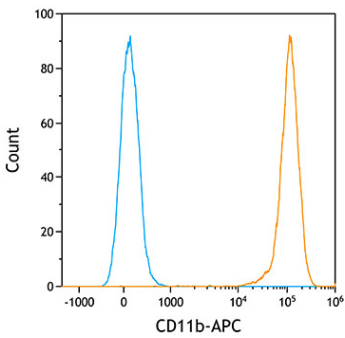
Affinity purification

Storage

Store at 4°C. Avoid freeze / thaw cycles.

Buffer: PBS containing 0.2% BSA, preserved with proclin300 or sodium azide (as specified on the Certificate of Analysis), pH 7.2.

Validation Data



Flow cytometry:1X10⁶ Human PBMC were surface-stained with APC Mouse anti-Human CD11b mAb (A22811, orange line) or APC Mouse IgG2b isotype control mAb (A22884, blue line).