

FITC Mouse anti-Human CD15/SSEA-1 mAb

Catalog No.: A22812

Basic Information

Observed MW

Refer to figures

Calculated MW

59kDa

Category

Primary antibody

Applications

FC

Cross-Reactivity

Human

CloneNo number

AMC0539

Conjugate

FITC. Ex:491nm. Em:516nm.

Recommended Dilutions

FC 10 µL/Test

Background

The product of this gene transfers fucose to N-acetyllactosamine polysaccharides to generate fucosylated carbohydrate structures. It catalyzes the synthesis of the non-sialylated antigen, Lewis x (CD15).

Immunogen Information

Gene ID

2526

Swiss Prot

P22083

Immunogen

Recombinant protein of human CD15.

Synonyms

LeX; CD15; ELFT; FCT3A; FUTIV; SSEA-1; FUC-TIV

Contact

 | 400-999-6126

 | cn.market@abclonal.com.cn

 | www.abclonal.com.cn

Product Information

Source

Mouse

Isotype

IgM

Purification

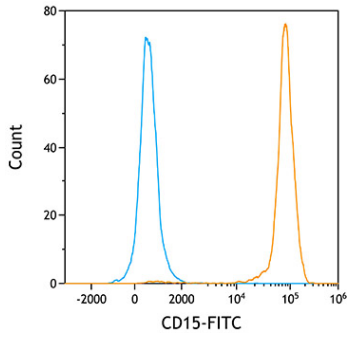
Affinity purification

Storage

Store at 4°C. Avoid freeze / thaw cycles.

Buffer: PBS with 0.1% Proclin300,0.2% BSA,pH7.2.

Validation Data



Flow cytometry: 1×10^6 Human PBMC were surface-stained with FITC Mouse anti-Human CD15 mAb (A22812, orange line) or FITC Mouse IgM isotype control mAb (A22885, blue line).