

FITC Mouse anti-Human CD19 mAb

Catalog No.: A22815

Basic Information

Observed MW

Refer to figures

Calculated MW

61kDa

Category

Primary antibody

Applications

FC

Cross-Reactivity

Human

CloneNo number

AMC0541

Conjugate

FITC. Ex:491nm. Em:516nm.

Recommended Dilutions

FC 10 µL/Test

Background

This gene encodes a member of the immunoglobulin gene superfamily. Expression of this cell surface protein is restricted to B cell lymphocytes. This protein is a reliable marker for pre-B cells but its expression diminishes during terminal B cell differentiation in antibody secreting plasma cells. The protein has two N-terminal extracellular Ig-like domains separated by a non-Ig-like domain, a hydrophobic transmembrane domain, and a large C-terminal cytoplasmic domain. This protein forms a complex with several membrane proteins including complement receptor type 2 (CD21) and tetraspanin (CD81) and this complex reduces the threshold for antigen-initiated B cell activation. Activation of this B-cell antigen receptor complex activates the phosphatidylinositol 3-kinase signalling pathway and the subsequent release of intracellular stores of calcium ions. This protein is a target of chimeric antigen receptor (CAR) T-cells used in the treatment of lymphoblastic leukemia. Mutations in this gene are associated with the disease common variable immunodeficiency 3 (CVID3) which results in a failure of B-cell differentiation and impaired secretion of immunoglobulins. CVID3 is characterized by hypogammaglobulinemia, an inability to mount an antibody response to antigen, and recurrent bacterial infections. Alternative splicing results in multiple transcript variants encoding distinct isoforms.

Immunogen Information

Gene ID

930

Swiss Prot

P15391

Immunogen

Recombinant protein of human CD19.

Synonyms

B4; CVID3

Contact

 | 400-999-6126 | cn.market@abclonal.com.cn | www.abclonal.com.cn

Product Information

Source

Mouse

Isotype

IgG1

Purification

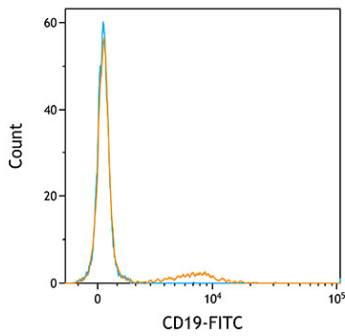
Affinity purification

Storage

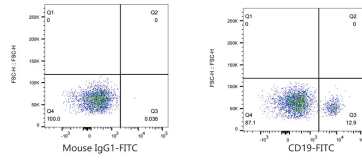
Store at 4°C. Avoid freeze / thaw cycles.

Buffer: PBS with 0.1% Proclin300,0.2% BSA,pH7.2.

Validation Data



Flow cytometry: 1×10^6 Human PBMC were surface-stained with FITC Mouse anti-Human CD19 mAb (A22815, orange line) or FITC Mouse IgG1 isotype control mAb (A22877, blue line).



Flow cytometry: 1×10^6 Human PBMC were surface-stained with FITC Mouse IgG1 isotype control mAb (A22877, left) or FITC Mouse anti-Human CD19 mAb (A22815, right).