

APC Mouse anti-Human HLA-DR mAb

Catalog No.: A22837

Basic Information

Observed MW

Refer to figures

Calculated MW

Category

Primary antibody

Applications

FC

Cross-Reactivity

Human

CloneNo number

AMC0547

Conjugate

APC. Ex:650nm. Em:660nm.

Recommended Dilutions

FC 10 μ L/Test

Background

HLA-DRB1 belongs to the HLA class II beta chain paralogs. The class II molecule is a heterodimer consisting of an alpha (DRA) and a beta chain (DRB), both anchored in the membrane. It plays a central role in the immune system by presenting peptides derived from extracellular proteins. Class II molecules are expressed in antigen presenting cells (APC: B lymphocytes, dendritic cells, macrophages). The beta chain is approximately 26-28 kDa. It is encoded by 6 exons. Exon one encodes the leader peptide; exons 2 and 3 encode the two extracellular domains; exon 4 encodes the transmembrane domain; and exon 5 encodes the cytoplasmic tail. Within the DR molecule the beta chain contains all the polymorphisms specifying the peptide binding specificities. Hundreds of DRB1 alleles have been described and typing for these polymorphisms is routinely done for bone marrow and kidney transplantation. DRB1 is expressed at a level five times higher than its paralogs DRB3, DRB4 and DRB5. DRB1 is present in all individuals. Allelic variants of DRB1 are linked with either none or one of the genes DRB3, DRB4 and DRB5. There are 4 related pseudogenes: DRB2, DRB6, DRB7, DRB8 and DRB9.

Immunogen Information

Gene ID

3122/3123

Swiss Prot

Immunogen

Recombinant protein of human HLA-DR.

Synonyms

HLA-DRB1;DRB1;HLA-DR1B;HLA-DRB;SS1;major histocompatibility complex;class II;DR beta 1

Contact

☎ | 400-999-6126

✉ | cn.market@abclonal.com.cn

🌐 | www.abclonal.com.cn

Product Information

Source

Mouse

Isotype

IgG1

Purification

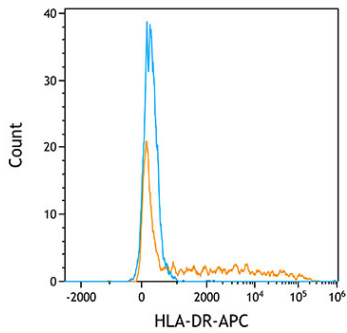
Affinity purification

Storage

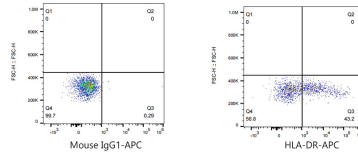
Store at 4°C. Avoid freeze / thaw cycles.

Buffer: PBS with 0.1% Proclin300,0.2% BSA,pH7.2.

Validation Data



Flow cytometry: 1×10^6 Human PBMC were surface-stained with APC Mouse anti-Human HLA-DR mAb (A22837, orange line) or APC Mouse IgG1 isotype control mAb (A22879, blue line).



Flow cytometry: 1×10^6 Human PBMC were surface-stained with APC Mouse IgG1 isotype control mAb (A22879, left) or APC Mouse anti-Human HLA-DR mAb (A22837, right).