

PE Mouse anti-Human CD105 mAb

Catalog No.: A22840

Basic Information

Observed MW

Refer to figures

Calculated MW

71kDa

Category

Primary antibody

Applications

FC

Cross-Reactivity

Human

CloneNo number

AMC0548

Conjugate

PE. Ex:565nm. Em:574nm.

Recommended Dilutions

FC 10 µL/Test

Background

This gene encodes a homodimeric transmembrane protein which is a major glycoprotein of the vascular endothelium. This protein is a component of the transforming growth factor beta receptor complex and it binds to the beta1 and beta3 peptides with high affinity. Mutations in this gene cause hereditary hemorrhagic telangiectasia, also known as Osler-Rendu-Weber syndrome 1, an autosomal dominant multisystemic vascular dysplasia. This gene may also be involved in preeclampsia and several types of cancer. Alternatively spliced transcript variants encoding different isoforms have been found for this gene.

Immunogen Information

Gene ID

2022

Swiss Prot

P17813

Immunogen

Recombinant protein of human CD105.

Synonyms

END; HHT1; ORW1

Contact

☎ | 400-999-6126

✉ | cn.market@abclonal.com.cn

🌐 | www.abclonal.com.cn

Product Information

Source

Mouse

Isotype

IgG2a

Purification

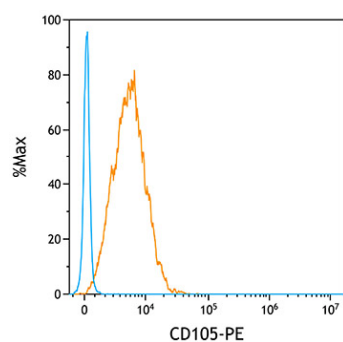
Affinity purification

Storage

Store at 4°C. Avoid freeze / thaw cycles.

Buffer: PBS with 0.1% Proclin300,0.2% BSA,pH7.2.

Validation Data



Flow cytometry: 1×10^6 Human PBMC were surface-stained with PE Mouse anti-Human CD105 mAb (A22840, orange line) or PE Mouse IgG2a isotype control mAb (A22881, blue line).