

BRRF2 Rabbit pAb

Catalog No.: A22866

Basic Information

Observed MW

100kDa

Calculated MW

56kDa

Category

Primary antibody

Applications

WB, ELISA

Cross-Reactivity

Epstein-Barr virus

Background

BRRF2 is a capsid protein, but it can be secreted into the bloodstream, giving it the opportunity to be a diagnostic or immunotherapy target. The Epstein-Barr virus BRRF2 gene product is involved in viral progeny production.

Recommended Dilutions

WB 1:500 - 1:1000

ELISA Recommended starting concentration is 1 µg/mL. Please optimize the concentration based on your specific assay requirements.

Immunogen Information

Gene ID

3783729

Swiss Prot

P03210

Immunogen

Recombinant protein (or fragment). This information is considered to be commercially sensitive.

Synonyms

Tegument protein BRRF2; BRRF2

Contact

 | 400-999-6126

 | cn.market@abclonal.com.cn

 | www.abclonal.com.cn

Product Information

Source

Rabbit

Isotype

IgG

Purification

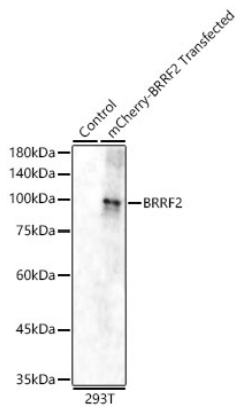
Affinity purification

Storage

Store at -20°C. Avoid freeze / thaw cycles.

Buffer: PBS containing 50% glycerol, preserved with proclin300 or sodium azide (as specified on the Certificate of Analysis), pH 7.3.

Validation Data



Western blot analysis of lysates from wild type (WT) and 293T cells transfected with BRRF2 using BRRF2 Rabbit pAb (A22866) at 1:1000 dilution.
Secondary antibody: HRP-conjugated Goat anti-Rabbit IgG (H+L) (AS014) at 1:10000 dilution.
Lysates/proteins: 25 µg per lane.
Blocking buffer: 3% nonfat dry milk in TBST.
Detection: ECL Basic Kit (RM00020).
Exposure time: 1s.