

COL4A4 Rabbit pAb

Catalog No.: A22870

Basic Information

Observed MW

160kDa

Calculated MW

164kDa

Category

Primary antibody

Applications

WB, ELISA

Cross-Reactivity

Human

Background

This gene encodes one of the six subunits of type IV collagen, the major structural component of basement membranes. This particular collagen IV subunit, however, is only found in a subset of basement membranes. Like the other members of the type IV collagen gene family, this gene is organized in a head-to-head conformation with another type IV collagen gene so that each gene pair shares a common promoter. Mutations in this gene are associated with type II autosomal recessive Alport syndrome (hereditary glomerulonephropathy) and with familial benign hematuria (thin basement membrane disease). Two transcripts, differing only in their transcription start sites, have been identified for this gene and, as is common for collagen genes, multiple polyadenylation sites are found in the 3' UTR.

Recommended Dilutions

WB 1:500 - 1:1000

ELISA Recommended starting concentration is 1 µg/mL. Please optimize the concentration based on your specific assay requirements.

Immunogen Information

Gene ID

1286

Swiss Prot

P53420

Immunogen

Recombinant protein (or fragment). This information is considered to be commercially sensitive.

Synonyms

BFH; ATS2; BFH1; CA44; COL4A4

Contact

 | 400-999-6126

 | cn.market@abclonal.com.cn

 | www.abclonal.com.cn

Product Information

Source

Rabbit

Isotype

IgG

Purification

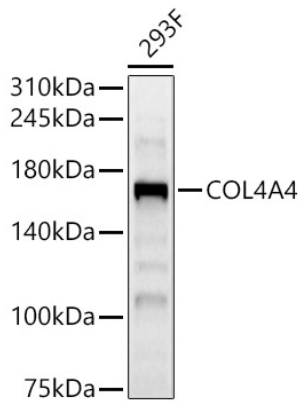
Affinity purification

Storage

Store at -20°C. Avoid freeze / thaw cycles.

Buffer: PBS containing 50% glycerol, preserved with proclin300 or sodium azide (as specified on the Certificate of Analysis), pH 7.3.

Validation Data



Western blot analysis of lysates from 293F cells, using COL4A4 Rabbit pAb (A22870) at 1:800 dilution.
Secondary antibody: HRP-conjugated Goat anti-Rabbit IgG (H+L) (AS014) at 1:10000 dilution.
Lysates/proteins: 25µg per lane.
Blocking buffer: 3% nonfat dry milk in TBST.
Detection: ECL Basic Kit (RM00020).
Exposure time: 20s.