

Aim2 Rabbit pAb

Catalog No.: A22874

Basic Information

Observed MW

39kDa

Calculated MW

40kDa

Category

Primary antibody

Applications

WB, ELISA

Cross-Reactivity

Rat

Background

Enables double-stranded DNA binding activity and identical protein binding activity. Involved in positive regulation of macromolecule metabolic process; pyroptosis; and regulation of defense response. Acts upstream of or within cellular response to interferon-beta. Located in cytoplasm. Part of AIM2 inflammasome complex. Orthologous to human AIM2 (absent in melanoma 2).

Recommended Dilutions

WB 1:500 - 1:1000

ELISA Recommended starting concentration is 1 µg/mL. Please optimize the concentration based on your specific assay requirements.

Immunogen Information

Gene ID

383619

Swiss Prot

Q91VJ1

Immunogen

Synthetic peptide. This information is considered to be commercially sensitive.

Synonyms

Gm1313; Ifi210; Aim2

Contact

☎ | 400-999-6126

✉ | cn.market@abclonal.com.cn

🌐 | www.abclonal.com.cn

Product Information

Source

Rabbit

Isotype

IgG

Purification

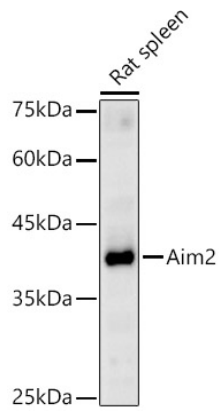
Affinity purification

Storage

Store at -20°C. Avoid freeze / thaw cycles.

Buffer: PBS containing 50% glycerol, preserved with proclin300 or sodium azide (as specified on the Certificate of Analysis), pH 7.3.

Validation Data



Western blot analysis of lysates from Rat spleen, using Aim2 Rabbit pAb (A22874) at 1:1000 dilution.
Secondary antibody: HRP-conjugated Goat anti-Rabbit IgG (H+L) (AS014) at 1:10000 dilution.
Lysates/proteins: 25µg per lane.
Blocking buffer: 3% nonfat dry milk in TBST.
Detection: ECL Basic Kit (RM00020).
Exposure time: 180s.