

Yipf6 Rabbit pAb

Catalog No.: A22875

Basic Information

Observed MW

26kDa

Calculated MW

26kDa

Category

Primary antibody

Applications

WB, ELISA

Cross-Reactivity

Mouse, Rat

Background

Enables identical protein binding activity. Acts upstream of or within intestinal epithelial cell development. Located in COPII-coated ER to Golgi transport vesicle; cis-Golgi network; and trans-Golgi network. Orthologous to human YIPF6 (Yip1 domain family member 6).

Recommended Dilutions

WB 1:100 - 1:500

ELISA Recommended starting concentration is 1 µg/mL. Please optimize the concentration based on your specific assay requirements.

Immunogen Information

Gene ID

77929

Swiss Prot

Q8BR70

Immunogen

Recombinant protein (or fragment). This information is considered to be commercially sensitive.

Synonyms

A430107J06Rik; Yipf6

Contact

☎ | 400-999-6126

✉ | cn.market@abclonal.com.cn

🌐 | www.abclonal.com.cn

Product Information

Source

Rabbit

Isotype

IgG

Purification

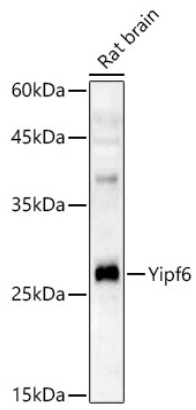
Affinity purification

Storage

Store at -20°C. Avoid freeze / thaw cycles.

Buffer: PBS containing 50% glycerol, preserved with proclin300 or sodium azide (as specified on the Certificate of Analysis), pH 7.3.

Validation Data



Western blot analysis of lysates from Rat brain using Yipf6 Rabbit pAb (A22875) at 1:400 dilution.
Secondary antibody: HRP-conjugated Goat anti-Rabbit IgG (H+L) (AS014) at 1:10000 dilution.
Lysates/proteins: 25 µg per lane.
Blocking buffer: 3% nonfat dry milk in TBST.
Detection: ECL Enhanced Kit (RM00021).
Exposure time: 90s.