

FITC Mouse IgM isotype control

Catalog No.: A22885

Basic Information

Observed MW

Refer to figures

Calculated MW

Category

Primary antibody

Applications

FC

Cross-Reactivity

CloneNo number

AMC0556

Conjugate

FITC. Ex:491nm. Em:516nm.

Background

Recommended Dilutions

FC 10 µL/Test

Immunogen Information

Gene ID

Swiss Prot

Immunogen

Recombinant protein (or fragment). This information is considered to be commercially sensitive.

Synonyms

Contact

 | 400-999-6126

 | cn.market@abclonal.com.cn

 | www.abclonal.com.cn

Product Information

Source

Mouse

Isotype

Mouse IgM

Purification

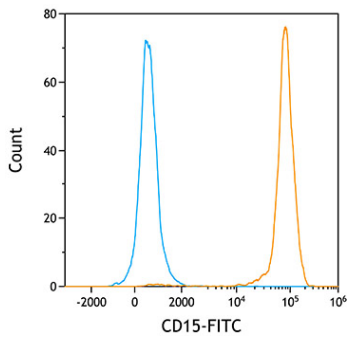
Affinity purification

Storage

Store at 4°C. Avoid freeze / thaw cycles.

Buffer: PBS with 0.1% Proclin300, 0.2% BSA, pH7.2.

Validation Data



Flow cytometry: 1×10^6 Human PBMC were surface-stained with FITC Mouse anti-Human CD15 mAb (A22812, orange line) or FITC Mouse IgM isotype control mAb (A22885, blue line).