

[KO Validated] CPT1A Rabbit mAb

Catalog No.: A22899 **KO** **Validated** **Recombinant**

Basic Information

Observed MW

88 kDa

Calculated MW

88 kDa

Category

Primary antibody

Applications

WB, IHC-P, ELISA

Cross-Reactivity

Human, Mouse, Rat

CloneNo number

ARC3148

Background

The mitochondrial oxidation of long-chain fatty acids is initiated by the sequential action of carnitine palmitoyltransferase I (which is located in the outer membrane and is detergent-labile) and carnitine palmitoyltransferase II (which is located in the inner membrane and is detergent-stable), together with a carnitine-acylcarnitine translocase. CPT I is the key enzyme in the carnitine-dependent transport across the mitochondrial inner membrane and its deficiency results in a decreased rate of fatty acid beta-oxidation. Alternatively spliced transcript variants encoding different isoforms have been found for this gene.

Recommended Dilutions

WB 1:1000 - 1:2000**IHC-P** 1:500 - 1:1000**ELISA** Recommended starting concentration is 1 µg/mL. Please optimize the concentration based on your specific assay requirements.

Immunogen Information

Gene ID

1374

Swiss Prot

P50416

Immunogen

Recombinant protein (or fragment). This information is considered to be commercially sensitive.

Synonyms

CPT1; CPT1-L; L-CPT1; CPT1A

Contact

 | 400-999-6126 | cn.market@abclonal.com.cn | www.abclonal.com.cn

Product Information

Source

Rabbit

Isotype

IgG

Purification

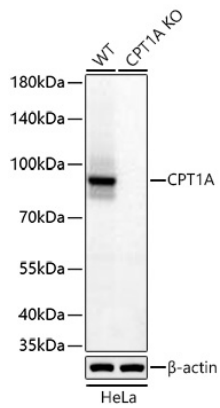
Affinity purification

Storage

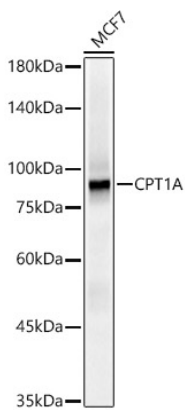
Store at -20°C. Avoid freeze / thaw cycles.

Buffer: PBS with 0.09% Sodium azide, 0.05% BSA, 40% glycerol, pH7.2.

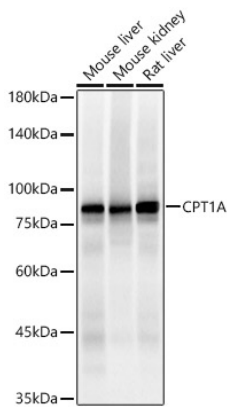
Validation Data



Western blot analysis of lysates from HeLa cells using [KO Validated] CPT1A Rabbit mAb (A22899) at 1:2000 dilution incubated overnight at 4°C.
Secondary antibody: HRP-conjugated Goat anti-Rabbit IgG (H+L) (AS014) at 1:10000 dilution.
Lysates/proteins: 25 µg per lane.
Blocking buffer: 3% nonfat dry milk in TBST.
Detection: ECL Basic Kit (RM00020).
Exposure time: 30 s.

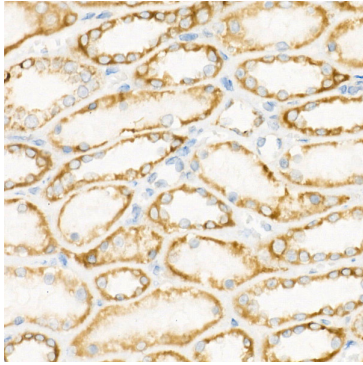


Western blot analysis of lysates from MCF7 cells, using [KO Validated] CPT1A Rabbit mAb (A22899) at 1:1000 dilution.
Secondary antibody: HRP-conjugated Goat anti-Rabbit IgG (H+L) (AS014) at 1:10000 dilution.
Lysates/proteins: 25 µg per lane.
Blocking buffer: 3% nonfat dry milk in TBST.
Detection: ECL Basic Kit (RM00020).
Exposure time: 30 s.

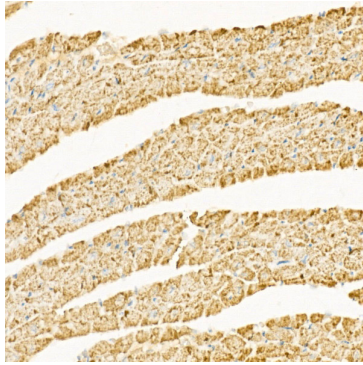


Western blot analysis of various lysates, using [KO Validated] CPT1A Rabbit mAb (A22899) at 1:1000 dilution.
Secondary antibody: HRP-conjugated Goat anti-Rabbit IgG (H+L) (AS014) at 1:10000 dilution.
Lysates/proteins: 25 µg per lane.
Blocking buffer: 3% nonfat dry milk in TBST.
Detection: ECL Basic Kit (RM00020).
Exposure time: 20 s.

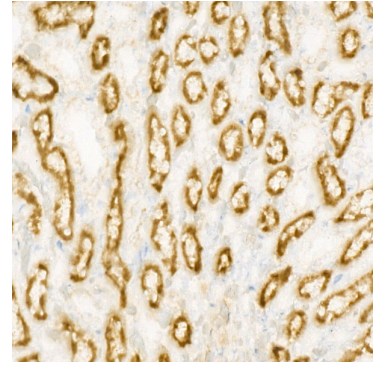
Validation Data



Immunohistochemistry analysis of paraffin-embedded Human kidney using [KO Validated] CPT1A Rabbit mAb (A22899) at dilution of 1:1000 (40x lens). High pressure antigen retrieval performed with 0.01M Tris/EDTA Buffer (pH 9.0) prior to IHC staining.



Immunohistochemistry analysis of paraffin-embedded Mouse heart using [KO Validated] CPT1A Rabbit mAb (A22899) at dilution of 1:1000 (40x lens). High pressure antigen retrieval performed with 0.01M Tris/EDTA Buffer (pH 9.0) prior to IHC staining.



Immunohistochemistry analysis of paraffin-embedded Rat kidney using [KO Validated] CPT1A Rabbit mAb (A22899) at dilution of 1:1000 (40x lens). High pressure antigen retrieval performed with 0.01M Tris/EDTA Buffer (pH 9.0) prior to IHC staining.