

ALOX15 Rabbit mAb

Catalog No.: A22908

Recombinant

1 Publications

Basic Information

Observed MW

75 kDa

Calculated MW

75 kDa

Category

Primary antibody

Applications

WB,IHC-P,ELISA

Cross-Reactivity

Human, Mouse, Rat

CloneNo number

ARC3138

Background

This gene encodes a member of the lipoxygenase family of proteins. The encoded enzyme acts on various polyunsaturated fatty acid substrates to generate various bioactive lipid mediators such as eicosanoids, hepxilins, lipoxins, and other molecules. The encoded enzyme and its reaction products have been shown to regulate inflammation and immunity. Multiple pseudogenes of this gene have been identified in the human genome.

Recommended Dilutions

WB 1:1000 - 1:3000

IHC-P 1:4000 - 1:16000

ELISA Recommended starting concentration is 1 µg/mL. Please optimize the concentration based on your specific assay requirements.

Immunogen Information

Gene ID

246

Swiss Prot

P16050

Immunogen

Recombinant protein (or fragment). This information is considered to be commercially sensitive.

Synonyms

LOG15; 12-LOX; 15-LOX; 15-LOX-1; ALOX15

Contact

☎ | 400-999-6126

✉ | cn.market@abclonal.com.cn

🌐 | www.abclonal.com.cn

Product Information

Source

Rabbit

Isotype

IgG

Purification

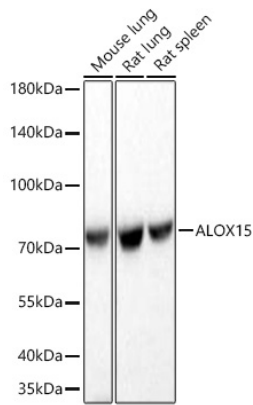
Protein A purified

Storage

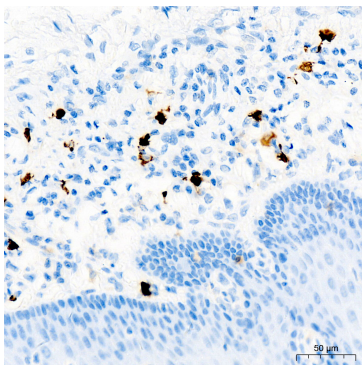
Store at -20°C. Avoid freeze / thaw cycles.

Buffer: PBS with 0.09% Sodium azide, 0.05% BSA, 40% glycerol, pH7.2.

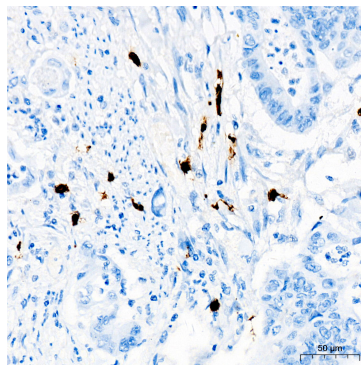
Validation Data



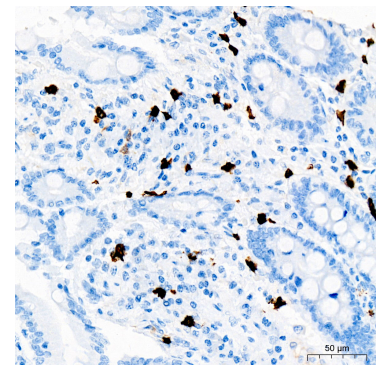
Western blot analysis of various lysates using ALOX15 Rabbit mAb (A22908) at 1:1000 dilution incubated at room temperature for 1.5 hours.
 Secondary antibody: HRP-conjugated Goat anti-Rabbit IgG (H+L) (AS014) at 1:10000 dilution.
 Lysates/proteins: 25 µg per lane.
 Blocking buffer: 3% nonfat dry milk in TBST.
 Detection: ECL Basic Kit (RM00020).
 Exposure time: 20 s.



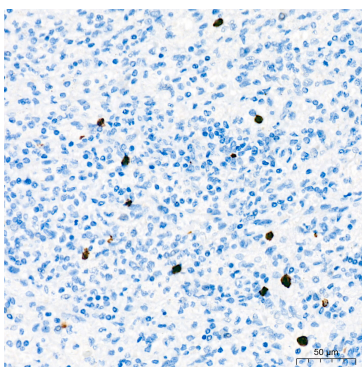
Immunohistochemistry analysis of paraffin-embedded Human esophagus tissue using ALOX15 Rabbit mAb (A22908) at a dilution of 1:16000 (40x lens). High pressure antigen retrieval was performed with 0.01 M Tris-EDTA buffer (pH 9.0) prior to IHC staining.



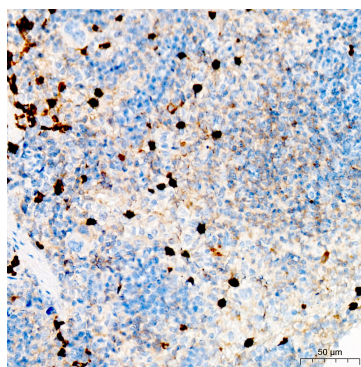
Immunohistochemistry analysis of paraffin-embedded Human colon carcinoma tissue using ALOX15 Rabbit mAb (A22908) at a dilution of 1:16000 (40x lens). High pressure antigen retrieval was performed with 0.01 M Tris-EDTA buffer (pH 9.0) prior to IHC staining.



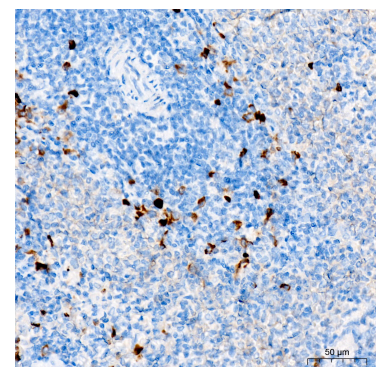
Immunohistochemistry analysis of paraffin-embedded Human small intestine tissue using ALOX15 Rabbit mAb (A22908) at a dilution of 1:16000 (40x lens). High pressure antigen retrieval was performed with 0.01 M Tris-EDTA buffer (pH 9.0) prior to IHC staining.



Immunohistochemistry analysis of paraffin-embedded Human spleen tissue using ALOX15 Rabbit mAb (A22908) at a dilution of 1:16000 (40x lens). High pressure antigen retrieval was performed with 0.01 M Tris-EDTA buffer (pH 9.0) prior to IHC staining.



Immunohistochemistry analysis of paraffin-embedded Mouse spleen tissue using ALOX15 Rabbit mAb (A22908) at a dilution of 1:16000 (40x lens). High pressure antigen retrieval was performed with 0.01 M Tris-EDTA buffer (pH 9.0) prior to IHC staining.



Immunohistochemistry analysis of paraffin-embedded Rat spleen tissue using ALOX15 Rabbit mAb (A22908) at a dilution of 1:16000 (40x lens). High pressure antigen retrieval was performed with 0.01 M Tris-EDTA buffer (pH 9.0) prior to IHC staining.