

COL4A1 Rabbit mAb

Catalog No.: A22910 Recombinant

Basic Information

Observed MW

240kDa

Calculated MW

161kDa

Category

Primary antibody

Applications

WB,IHC-P,ELISA

Cross-Reactivity

Human

CloneNo number

ARC3146

Background

This gene encodes a type IV collagen alpha protein. Type IV collagen proteins are integral components of basement membranes. This gene shares a bidirectional promoter with a paralogous gene on the opposite strand. The protein consists of an amino-terminal 7S domain, a triple-helix forming collagenous domain, and a carboxy-terminal non-collagenous domain. It functions as part of a heterotrimer and interacts with other extracellular matrix components such as perlecan, proteoglycans, and laminins. In addition, proteolytic cleavage of the non-collagenous carboxy-terminal domain results in a biologically active fragment known as arresten, which has anti-angiogenic and tumor suppressor properties. Mutations in this gene cause porencephaly, cerebrovascular disease, and renal and muscular defects. Alternative splicing results in multiple transcript variants.

Recommended Dilutions

WB 1:100 - 1:500

IHC-P 1:100 - 1:500

ELISA Recommended starting concentration is 1 µg/mL. Please optimize the concentration based on your specific assay requirements.

Immunogen Information

Gene ID

1282

Swiss Prot

P02462

Immunogen

Synthetic peptide. This information is considered to be commercially sensitive.

Synonyms

BSVD; BSVD1; RATOR; PADMAL; COL4A1s; COL4A1

Contact

 | 400-999-6126

 | cn.market@abclonal.com.cn
 | www.abclonal.com.cn

Product Information

Source

Rabbit

Isotype

IgG

Purification

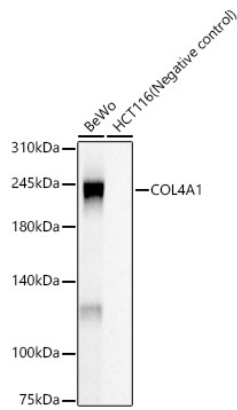
Protein A purified

Storage

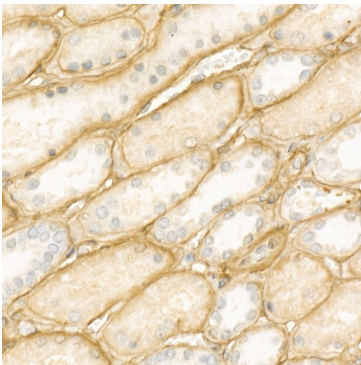
Store at -20°C. Avoid freeze / thaw cycles.

Buffer: 59% PBS with 0.01% Sodium azide,0.05% BSA,40% Glycerol,PH 7.2

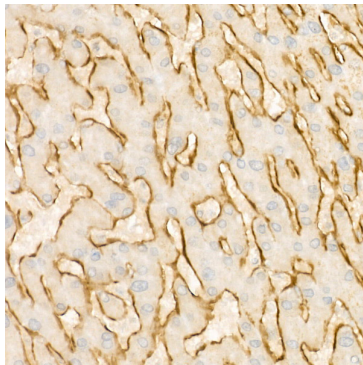
Validation Data



Western blot analysis of various lysates, using COL4A1 Rabbit mAb (A22910) at 1:500 dilution. Secondary antibody: HRP-conjugated Goat anti-Rabbit IgG (H+L) (AS014) at 1:10000 dilution. Lysates/proteins: 25 μ g per lane. Blocking buffer: 3% nonfat dry milk in TBST. Detection: ECL Basic Kit (RM00020). Exposure time: 20s.



Immunohistochemistry analysis of paraffin-embedded Human kidney using COL4A1 Rabbit mAb (A22910) at dilution of 1:500 (40x lens). High pressure antigen retrieval performed with 0.01M Tris/EDTA Buffer (pH 9.0) prior to IHC staining.



Immunohistochemistry analysis of paraffin-embedded Human liver cancer using COL4A1 Rabbit mAb (A22910) at dilution of 1:500 (40x lens). High pressure antigen retrieval performed with 0.01M Tris/EDTA Buffer (pH 9.0) prior to IHC staining.