

# NLRC4 Rabbit mAb

Catalog No.: A22931 **Recombinant**

## Basic Information

### Observed MW

116kDa

### Calculated MW

116kDa

### Category

Primary antibody

### Applications

WB,ELISA

### Cross-Reactivity

Mouse

### CloneNo number

ARC3155

## Background

This gene encodes a member of the caspase recruitment domain-containing NLR family. Family members play essential roles in innate immune response to a wide range of pathogenic organisms, tissue damage and other cellular stresses. Mutations in this gene result in autoinflammation with infantile enterocolitis. Alternative splicing results in multiple transcript variants.

## Recommended Dilutions

**WB** 1:500 - 1:1000

**ELISA** Recommended starting concentration is 1 µg/mL. Please optimize the concentration based on your specific assay requirements.

## Immunogen Information

### Gene ID

58484

### Swiss Prot

Q9NPP4

### Immunogen

Recombinant protein (or fragment). This information is considered to be commercially sensitive.

### Synonyms

CLAN; IPAF; AIFEC; CLAN1; CLANA; CLANB; CLANC; CLAND; FCAS4; CARD12; CLR2.1; NLRC4

## Contact

 | 400-999-6126

 | [cn.market@abclonal.com.cn](mailto:cn.market@abclonal.com.cn)

 | [www.abclonal.com.cn](http://www.abclonal.com.cn)

## Product Information

### Source

Rabbit

### Isotype

IgG

### Purification

Affinity purification

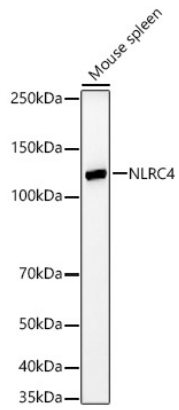
### Storage

Store at -20°C. Avoid freeze / thaw cycles.

Buffer: PBS with 0.01% Sodium azide, 0.05% BSA, 40% glycerol, pH7.2.

## Validation Data

---



Western blot analysis of lysates from Mouse spleen, using NLRC4 Rabbit mAb (A22931) at 1:1000 dilution.  
Secondary antibody: HRP-conjugated Goat anti-Rabbit IgG (H+L) (AS014) at 1:10000 dilution.  
Lysates/proteins: 25µg per lane.  
Blocking buffer: 3% nonfat dry milk in TBST.  
Detection: ECL Basic Kit (RM00020).  
Exposure time: 180s.