

METTL1 Rabbit pAb

Catalog No.: A22943

Basic Information

Observed MW

28kDa/31kDa/35kDa

Calculated MW

31kDa

Category

Primary antibody

Applications

WB,IHC-P

Cross-Reactivity

Human, Mouse, Rat

Background

This gene is similar in sequence to the *S. cerevisiae* YDL201w gene. The gene product contains a conserved S-adenosylmethionine-binding motif and is inactivated by phosphorylation. Alternative splice variants encoding different protein isoforms have been described for this gene. A pseudogene has been identified on chromosome X.

Recommended Dilutions

WB 1:1000 - 1:5000

IHC-P 1:1000 - 1:5000

Immunogen Information

Gene ID

4234

Swiss Prot

Q9UBP6

Immunogen

Recombinant protein (or fragment). This information is considered to be commercially sensitive.

Synonyms

TRM8; TRMT8; C12orf1; YDL201w; METTL1

Contact

☎ | 400-999-6126

✉ | cn.market@abclonal.com.cn

🌐 | www.abclonal.com.cn

Product Information

Source

Rabbit

Isotype

IgG

Purification

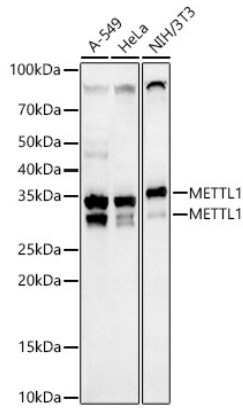
Affinity purification

Storage

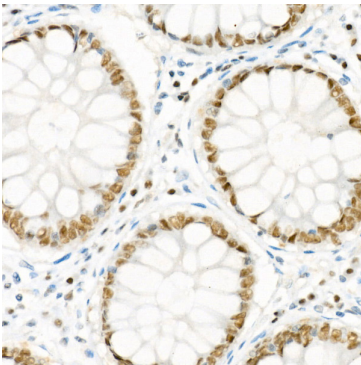
Store at -20°C. Avoid freeze / thaw cycles.

Buffer: PBS containing 50% glycerol, preserved with proclin300 or sodium azide (as specified on the Certificate of Analysis), pH 7.3.

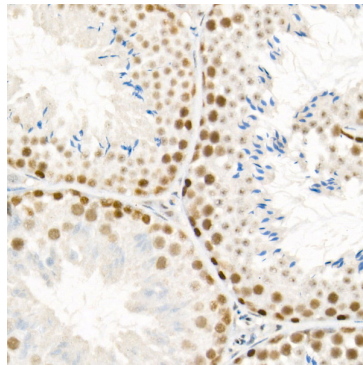
Validation Data



Western blot analysis of various lysates, using METTL1 Rabbit pAb (A22943) at 1:2000 dilution. Secondary antibody: HRP-conjugated Goat anti-Rabbit IgG (H+L) (AS014) at 1:10000 dilution. Lysates/proteins: 25µg per lane. Blocking buffer: 3% nonfat dry milk in TBST. Detection: ECL Basic Kit (RM00020). Exposure time: 90s.



Immunohistochemistry analysis of paraffin-embedded Human colon carcinoma using METTL1 Rabbit pAb (A22943) at dilution of 1:2000 (40x lens). High pressure antigen retrieval performed with 0.01M Citrate buffer (pH 6.0) prior to IHC staining.



Immunohistochemistry analysis of paraffin-embedded Mouse testis using METTL1 Rabbit pAb (A22943) at dilution of 1:2000 (40x lens). High pressure antigen retrieval performed with 0.01M Citrate buffer (pH 6.0) prior to IHC staining.