

METTL16 Rabbit mAb

Catalog No.: A22958 **Recombinant**

Basic Information

Observed MW

78kDa

Calculated MW

64kDa

Category

Primary antibody

Applications

WB,ELISA

Cross-Reactivity

Human, Mouse, Rat

CloneNo number

ARC3162

Background

Enables RNA binding activity and RNA methyltransferase activity. Involved in RNA modification and regulation of mRNA metabolic process. Located in cytoplasm and nucleus.

Recommended Dilutions

WB 1:500 - 1:1000

ELISA Recommended starting concentration is 1 µg/mL. Please optimize the concentration based on your specific assay requirements.

Immunogen Information

Gene ID

79066

Swiss Prot

Q86W50


Immunogen

A synthetic peptide around A9 of MRC1

Synonyms

METT10D; METTL16

Contact

 | 400-999-6126

 | cn.market@abclonal.com.cn

 | www.abclonal.com.cn

Product Information

Source

Rabbit

Isotype

IgG

Purification

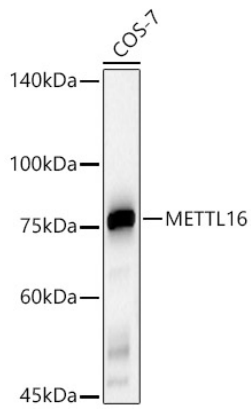
Affinity purification

Storage

Store at -20°C. Avoid freeze / thaw cycles.

Buffer: 10 mM sodium HEPES and 150 mM NaCl with 0.02% Sodium azide, 100 µg/ml BSA, 50% Glycerol, pH 7.5

Validation Data



Western blot analysis of various lysates, using METTL16 Rabbit mAb (A22958) at 1:1000 dilution.
Secondary antibody: HRP-conjugated Goat anti-Rabbit IgG (H+L) (AS014) at 1:10000 dilution.
Lysates/proteins: 25µg per lane.
Blocking buffer: 3% nonfat dry milk in TBST.
Detection: ECL Basic Kit (RM00020).
Exposure time: 180s.