

SRP54 Rabbit mAb

Catalog No.: A2296 **Recombinant**

Basic Information

Observed MW

56kDa

Calculated MW

56kDa

Category

Primary antibody

Applications

ELISA, WB, IF/ICC

Cross-Reactivity

Human, Mouse, Rat

CloneNo number

ARC1904

Background

Enables several functions, including 7S RNA binding activity; endoplasmic reticulum signal peptide binding activity; and guanyl ribonucleotide binding activity. Contributes to GTPase activity. Involved in granulocyte differentiation and protein targeting to ER. Located in cytosol and nucleus. Part of signal recognition particle, endoplasmic reticulum targeting. Implicated in severe congenital neutropenia 8.

Recommended Dilutions

WB 1:500 - 1:1000

IF/ICC 1:50 - 1:200

Immunogen Information

Gene ID

6729

Swiss Prot

P61011

Immunogen

A synthetic peptide corresponding to a sequence within amino acids 400-504 of human SRP54 (P61011).

Synonyms

SCN8; SRP54

Contact

☎ | 400-999-6126

✉ | cn.market@abclonal.com.cn

🌐 | www.abclonal.com.cn

Product Information

Source

Rabbit

Isotype

IgG

Purification

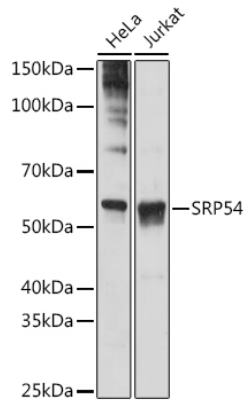
Affinity purification

Storage

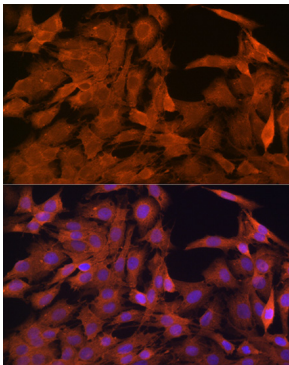
Store at -20°C. Avoid freeze / thaw cycles.

Buffer: PBS with 0.02% sodium azide, 0.05% BSA, 50% glycerol, pH7.3.

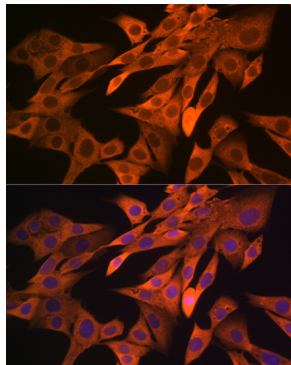
Validation Data



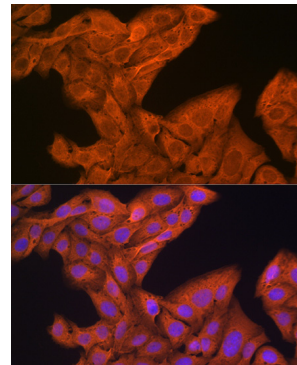
Western blot analysis of extracts of various cell lines, using SRP54 antibody (A2296) at 1:1000 dilution. Secondary antibody: HRP Goat Anti-Rabbit IgG (H+L) (AS014) at 1:10000 dilution. Lysates/proteins: 25µg per lane. Blocking buffer: 3% nonfat dry milk in TBST. Detection: ECL Basic Kit (RM00020). Exposure time: 1s.



Immunofluorescence analysis of C6 cells using SRP54 Rabbit mAb (A2296) at dilution of 1:100 (40x lens). Blue: DAPI for nuclear staining.



Immunofluorescence analysis of NIH-3T3 cells using SRP54 Rabbit mAb (A2296) at dilution of 1:100 (40x lens). Blue: DAPI for nuclear staining.



Immunofluorescence analysis of U-2 OS cells using SRP54 Rabbit mAb (A2296) at dilution of 1:100 (40x lens). Blue: DAPI for nuclear staining.