

# HHLA2 Rabbit mAb

Catalog No.: A22960 **Recombinant**

## Basic Information

### Observed MW

70-80kDa

### Calculated MW

47kDa

### Category

Primary antibody

### Applications

WB,ELISA

### Cross-Reactivity

Human

### CloneNo number

ARC3164

## Background

This gene encodes a protein ligand found on the surface of monocytes. The encoded protein is thought to regulate cell-mediated immunity by binding to a receptor on T lymphocytes and inhibiting the proliferation of these cells. Alternate splicing results in multiple transcript variants.

## Recommended Dilutions

**WB** 1:500 - 1:1000

**ELISA** Recommended starting concentration is 1 µg/mL. Please optimize the concentration based on your specific assay requirements.

## Immunogen Information

### Gene ID

11148

### Swiss Prot

Q9UM44

### Immunogen

Synthetic peptide. This information is considered to be commercially sensitive.

### Synonyms

B7y; B7H7; B7-H5; B7-H7; HHLA2

## Contact

☎ | 400-999-6126

✉ | [cn.market@abclonal.com.cn](mailto:cn.market@abclonal.com.cn)

🌐 | [www.abclonal.com.cn](http://www.abclonal.com.cn)

## Product Information

### Source

Rabbit

### Isotype

IgG

### Purification

Affinity purification

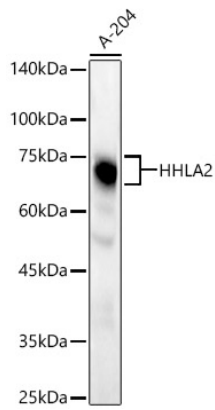
### Storage

Store at -20°C. Avoid freeze / thaw cycles.

Buffer: 10 mM sodium HEPES and 150 mM NaCl with proclin300 or sodium azide (as specified on the Certificate of Analysis), 100 µg/ml BSA, 50% Glycerol, pH 7.5

## Validation Data

---



Western blot analysis of lysates from A-204 cells, using HHLA2 Rabbit mAb (A22960) at 1:1000 dilution.  
Secondary antibody: HRP-conjugated Goat anti-Rabbit IgG (H+L) (AS014) at 1:10000 dilution.  
Lysates/proteins: 25µg per lane.  
Blocking buffer: 3% nonfat dry milk in TBST.  
Detection: ECL Basic Kit (RM00020).  
Exposure time: 180s.