

# CD141/Thrombomodulin Rabbit PolymAb®

Catalog No.: A22989-PM

## Basic Information

### Observed MW

90kDa

### Calculated MW

60kDa

### Category

Primary antibody

### Applications

WB,IHC-P,IF/ICC,FC,ELISA

### Cross-Reactivity

Human

## Background

The protein encoded by this intronless gene is an endothelial-specific type I membrane receptor that binds thrombin. This binding results in the activation of protein C, which degrades clotting factors Va and VIIIa and reduces the amount of thrombin generated. Mutations in this gene are a cause of thromboembolic disease, also known as inherited thrombophilia.

## Recommended Dilutions

<b>WB</b>	1:2000 - 1:10000
<b>IHC-P</b>	1:100 - 1:500
<b>IF/ICC</b>	1:50 - 1:200
<b>FC</b>	1:500 - 1:1000
<b>ELISA</b>	Recommended starting concentration is 1 µg/mL. Please optimize the concentration based on your specific assay requirements.

## Contact

☎ | 400-999-6126

✉ | [cn.market@abclonal.com.cn](mailto:cn.market@abclonal.com.cn)

🌐 | [www.abclonal.com.cn](http://www.abclonal.com.cn)

## Immunogen Information

### Gene ID

7056

### Swiss Prot

P07204

### Immunogen

Recombinant fusion protein containing a sequence corresponding to amino acids 19-515 of human CD141/Thrombomodulin. (NP\_000352.1).

### Synonyms

TM; THRM; AHUS6; BDCA3; CD141; BDCA-3; THPH12

## Product Information

### Source

Rabbit

### Isotype

IgG

### Purification

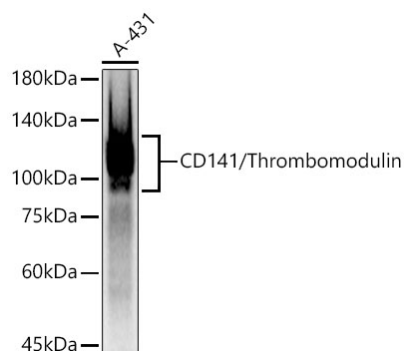
Affinity purification

### Storage

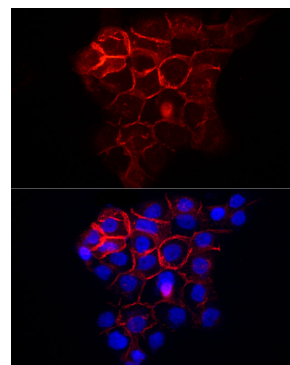
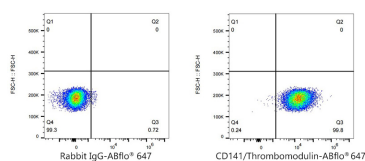
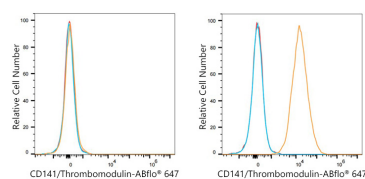
Store at -20°C. Avoid freeze / thaw cycles.

Buffer: PBS with 0.05% proclin300,0.05% BSA,50% glycerol,pH7.3.

## Validation Data



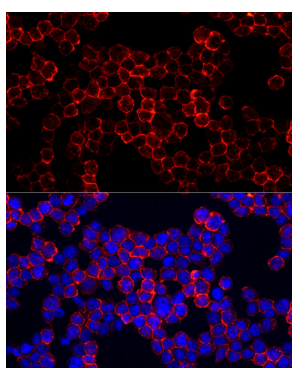
Western blot analysis of lysates from A-431 cells, using CD141/Thrombomodulin Rabbit PolymAb® (A22989-PM) at 1:5000 dilution.  
 Secondary antibody: HRP-conjugated Goat anti-Rabbit IgG (H+L) (AS014) at 1:10000 dilution.  
 Lysates/proteins: 25µg per lane.  
 Blocking buffer: 3% nonfat dry milk in TBST.  
 Detection: ECL Basic Kit (RM00020).  
 Exposure time: 1s.



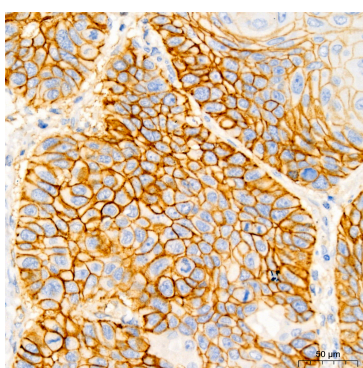
Flow cytometry:  $1 \times 10^6$  Jurkat cells (negative control, left) and THP-1 cells (right) were surface-stained with CD141/Thrombomodulin Rabbit PolymAb® (A22989, 2 µg/mL, orange line) or ABflo® 647 Rabbit IgG isotype control (A22070, 5 µg/Test, blue line), followed by Alexa Fluor® 647 conjugated goat anti-rabbit pAb staining. Non-fluorescently stained cells were used as blank control (red line).

Flow cytometry:  $1 \times 10^6$  THP-1 cells were surface-stained with ABflo® 647 Rabbit IgG isotype control (A22070, 5 µg/Test, left) or CD141/Thrombomodulin Rabbit PolymAb® (A22989, 2 µg/mL, right).

Immunofluorescence analysis of A431 cells using CD141/Thrombomodulin Rabbit PolymAb® (A22989-PM) at dilution of 1:100 (40x lens). Secondary antibody: Cy3-conjugated Goat anti-Rabbit IgG (H+L) (AS007) at 1:500 dilution. Blue: DAPI for nuclear staining.



Immunofluorescence analysis of THP-1 cells using CD141/Thrombomodulin Rabbit PolymAb® (A22989-PM) at dilution of 1:100 (40x lens). Secondary antibody: Cy3-conjugated Goat anti-Rabbit IgG (H+L) (AS007) at 1:500 dilution. Blue: DAPI for nuclear staining.



Immunohistochemistry analysis of paraffin-embedded Human lung squamous carcinoma tissue using CD141/Thrombomodulin Rabbit PolymAb® (A22989-PM) at dilution of 1:200 (40x lens). High pressure antigen retrieval performed with 0.01M Tris/EDTA Buffer (pH 9.0) prior to IHC staining.