

Granzyme B Rabbit mAb

Catalog No.: A22993 **Recombinant** **1 Publications**

Basic Information

Observed MW

Refer to figures

Calculated MW

28kDa

Category

Primary antibody

Applications

ELISA, IHC-P

Cross-Reactivity

Human

CloneNo number

ARC55455

Background

This gene encodes a member of the granzyme subfamily of proteins, part of the peptidase S1 family of serine proteases. The encoded preproprotein is secreted by natural killer (NK) cells and cytotoxic T lymphocytes (CTLs) and proteolytically processed to generate the active protease, which induces target cell apoptosis. This protein also processes cytokines and degrades extracellular matrix proteins, and these roles are implicated in chronic inflammation and wound healing. Expression of this gene may be elevated in human patients with cardiac fibrosis.

Recommended Dilutions

IHC-P 1:100 - 1:500

Immunogen Information

Gene ID

3002

Swiss Prot

P10144

Immunogen

A synthetic peptide corresponding to a sequence within amino acids 100-200 of human Granzyme B (NP_004122.2).

Synonyms

C11; HLP; CCPI; CGL1; CSPB; SECT; CGL-1; CSP-B; CTLA1; CTSG1; Granzyme B

Contact

 | 400-999-6126

 | cn.market@abclonal.com.cn

 | www.abclonal.com.cn

Product Information

Source

Rabbit

Isotype

IgG

Purification

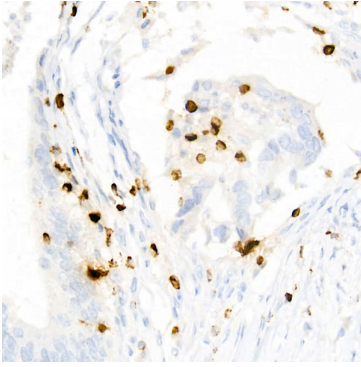
Affinity purification

Storage

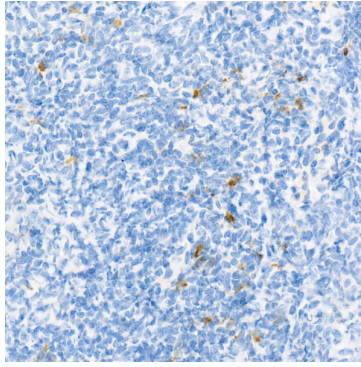
Store at -20°C. Avoid freeze / thaw cycles.

Buffer: PBS with 0.05% proclin300, 0.05% BSA, 50% glycerol, pH7.3.

Validation Data



Immunohistochemistry analysis of paraffin-embedded Human colon carcinoma using Granzyme B Rabbit mAb (A22993) at dilution of 1:400 (40x lens). Perform high pressure antigen retrieval with 10 mM Tris/EDTA buffer pH 9.0 before commencing with IHC staining protocol.



Immunohistochemistry analysis of paraffin-embedded Human tonsil using Granzyme B Rabbit mAb (A22993) at dilution of 1:400 (40x lens). Perform high pressure antigen retrieval with 10 mM Tris/EDTA buffer pH 9.0 before commencing with IHC staining protocol.