

SMC5 Rabbit pAb

Catalog No.: A2301 **1 Publications**

Basic Information

Observed MW

132kDa

Calculated MW

129kDa

Category

Primary antibody

Applications

ELISA, WB

Cross-Reactivity

Human, Mouse, Rat

Background

Predicted to enable ATP binding activity. Involved in several processes, including DNA recombination; cellular senescence; and positive regulation of maintenance of mitotic sister chromatid cohesion. Located in cell junction; chromosome; and nuclear body. Part of Smc5-Smc6 complex.

Recommended Dilutions

WB 1:1000 - 1:3000

Immunogen Information

Gene ID

23137

Swiss Prot

Q8IY18

Immunogen

Recombinant fusion protein containing a sequence corresponding to amino acids 872-1101 of human SMC5 (NP_055925.2).

Synonyms

ATELS2; SMC5L1; SMC5

Contact

☎ | 400-999-6126

✉ | cn.market@abclonal.com.cn

🌐 | www.abclonal.com.cn

Product Information

Source

Rabbit

Isotype

IgG

Purification

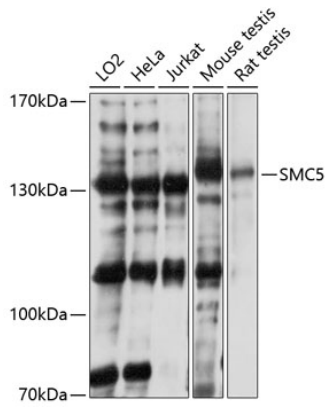
Affinity purification

Storage

Store at -20°C. Avoid freeze / thaw cycles.

Buffer: PBS with 0.01% thimerosal, 50% glycerol, pH7.3.

Validation Data



Western blot analysis of various lysates using SMC5 Rabbit pAb (A2301) at 1:3000 dilution.
Secondary antibody: HRP Goat Anti-Rabbit IgG (H+L) (AS014) at 1:10000 dilution.
Lysates/proteins: 25µg per lane.
Blocking buffer: 3% nonfat dry milk in TBST.
Detection: ECL Basic Kit (RM00020).
Exposure time: 10s.