

ABflo® 647 Rabbit anti-Human CD235a/Glycophorin A mAb

Catalog No.: A23015

Basic Information

Observed MW

Refer to figures

Calculated MW

13kDa/16kDa

Category

Primary antibody

Applications

FC

Cross-Reactivity

Human

CloneNo number

ARC58031-ABf647

Conjugate

ABflo® 647. Ex:648nm. Em:664nm.

Recommended Dilutions

FC 5 µl per 10⁶ cells in
100 µl volume

Background

Glycophorins A (GYPA) and B (GYPB) are major sialoglycoproteins of the human erythrocyte membrane which bear the antigenic determinants for the MN and Ss blood groups. In addition to the M or N and S or s antigens that commonly occur in all populations, about 40 related variant phenotypes have been identified. These variants include all the variants of the Miltenberger complex and several isoforms of Sta, as well as Dantu, Sat, He, Mg, and deletion variants Ena, S-s-U- and Mk. Most of the variants are the result of gene recombinations between GYPA and GYPB.

Immunogen Information

Gene ID

2993

Swiss Prot

P02724

Immunogen

Recombinant fusion protein containing a sequence corresponding to amino acids 20-91 of human CD235a (NP_002090.4).

Synonyms

MN; GPA; MNS; GPSAT; PAS-2; CD235a; GP Erik; HGpMiV; HGpMiXI; HGpSta(C)

Contact

 | 400-999-6126

 | cn.market@abclonal.com.cn

 | www.abclonal.com.cn

Product Information

Source

Rabbit

Isotype

IgG

Purification

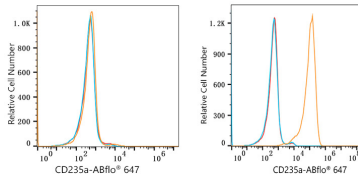
Affinity purification

Storage

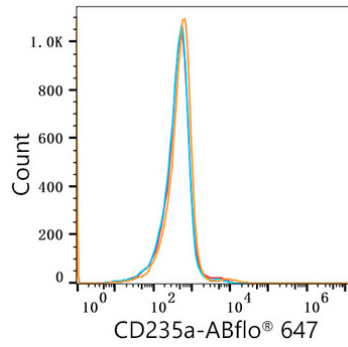
Store at 2-8°C. Avoid freeze.

Buffer: PBS with 0.03% proclin300,0.2% BSA,pH7.3.

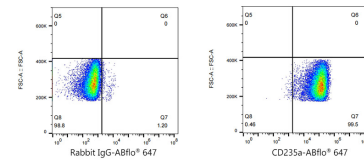
Validation Data



Flow cytometry: 1×10^6 THP1 cells (negative control, Left) and HEL cells (Right) were surface-stained with ABflo® 647 Rabbit anti-Human CD235a/Glycophorin A mAb (A23015, 5 μ l/Test, orange line) or ABflo® 647 Rabbit IgG isotype control (A22070, 5 μ l/Test, blue line). Non-fluorescently stained cells was used as blank control (red line).



Flow cytometry: 1×10^6 THP1 cells (negative control) were surface-stained with ABflo® 647 Rabbit anti-Human CD235a/Glycophorin A mAb (A23015, 5 μ l/Test, orange line) or ABflo® 647 Rabbit IgG isotype control (A22070, 5 μ l/Test, blue line). Non-fluorescently stained THP1 cells was used as blank control (red line).



Flow cytometry: 1×10^6 HEL cells were surface-stained with ABflo® 647 Rabbit IgG isotype control (A22070, 5 μ l/Test, left) or ABflo® 647 Rabbit anti-Human CD235a/Glycophorin A mAb (A23015, 5 μ l/Test, right).