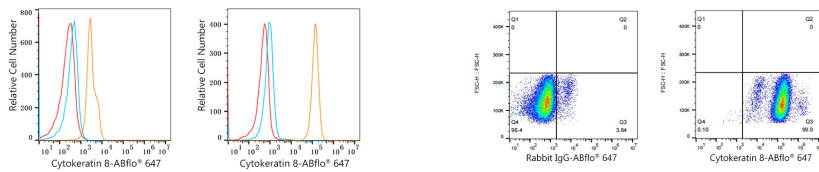


Validation Data



Flow cytometry: 1×10^6 Jurkat cells (negative control, Left) and HeLa cells (Right) were intracellularly-stained with ABflo® 647 Rabbit anti-Human Cytokeratin 8 mAb (A23019, 5 μ l/Test, orange line) or ABflo® 647 Rabbit IgG isotype control (A22070, 5 μ l/Test, blue line). Non-fluorescently stained cells was used as blank control (red line).

Flow cytometry: 1×10^6 HeLa cells were intracellularly-stained with ABflo® 647 Rabbit IgG isotype control (A22070, 5 μ l/Test, left) or ABflo® 647 Rabbit anti-Human Cytokeratin 8 mAb (A23019, 5 μ l/Test, right).