

# ABflo® 647 Rabbit anti-Human CEACAM5/CD66e mAb

Catalog No.: A23022

## Basic Information

### Observed MW

### Calculated MW

77kDa

### Category

Primary antibody

### Applications

FC

### Cross-Reactivity

Human

### CloneNo number

ARC58527-ABf647

### Conjugate

ABflo® 647. Ex:648nm. Em:664nm.

## Recommended Dilutions

**FC** 5 µl per 10<sup>6</sup> cells in  
100 µl volume

## Background

This gene encodes a cell surface glycoprotein that represents the founding member of the carcinoembryonic antigen (CEA) family of proteins. The encoded protein is used as a clinical biomarker for gastrointestinal cancers and may promote tumor development through its role as a cell adhesion molecule. Additionally, the encoded protein may regulate differentiation, apoptosis, and cell polarity. This gene is present in a CEA family gene cluster on chromosome 19. Alternative splicing results in multiple transcript variants.

## Immunogen Information

### Gene ID

1048

### Swiss Prot

P06731

### Immunogen

Recombinant fusion protein containing a sequence corresponding to amino acids 35-685 of human CEACAM5/CD66e(NP\_004354.3)

### Synonyms

CEA; CD66e

## Contact

☎ | 400-999-6126

✉ | [cn.market@abclonal.com.cn](mailto:cn.market@abclonal.com.cn)

🌐 | [www.abclonal.com.cn](http://www.abclonal.com.cn)

## Product Information

### Source

Rabbit

### Isotype

IgG

### Purification

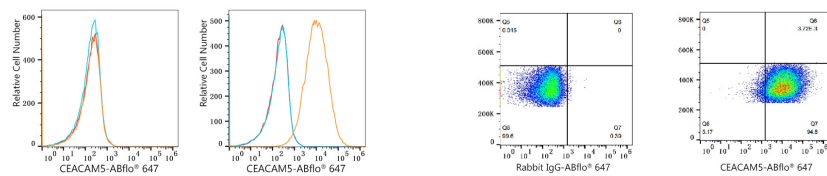
Affinity purification

### Storage

Store at 2-8°C. Avoid freeze.

Buffer: PBS with 0.03% proclin300,0.2% BSA,pH7.3.

## Validation Data



Flow cytometry:  $1 \times 10^6$  293T cells (negative control, Left) and HT-29 cells (Right) were surface-stained with ABflo® 647 Rabbit anti-Human CEACAM5/CD66e mAb (A23022, 5  $\mu$ l/Test, orange line) or ABflo® 647 Rabbit IgG isotype control (A22070, 5  $\mu$ l/Test, blue line). Non-fluorescently stained cells were used as blank control (red line).

Flow cytometry:  $1 \times 10^6$  HT-29 cells were surface-stained with ABflo® 647 Rabbit IgG isotype control (A22070, 5  $\mu$ l/Test, left) or ABflo® 647 Rabbit anti-Human CEACAM5/CD66e mAb (A23022, 5  $\mu$ l/Test, right).