

CD163 Rabbit pAb

Catalog No.: A23023

Basic Information

Observed MW

160kDa

Calculated MW

125kDa

Category

Primary antibody

Applications

ELISA, WB, IF/ICC

Cross-Reactivity

Human, Mouse, Rat

Background

The protein encoded by this gene is a member of the scavenger receptor cysteine-rich (SRCR) superfamily, and is exclusively expressed in monocytes and macrophages. It functions as an acute phase-regulated receptor involved in the clearance and endocytosis of hemoglobin/haptoglobin complexes by macrophages, and may thereby protect tissues from free hemoglobin-mediated oxidative damage. This protein may also function as an innate immune sensor for bacteria and inducer of local inflammation. Alternatively spliced transcript variants encoding different isoforms have been described for this gene.

Recommended Dilutions

WB 1:500 - 1:1000

IF/ICC 1:50 - 1:200

Immunogen Information

Gene ID

9332

Swiss Prot

Q86VB7

Immunogen

A synthetic peptide corresponding to a sequence within amino acids 42-261 of human CD163 (NP_004235.4?).

Synonyms

M130; MM130; SCAR11; CD163

Contact

☎ | 400-999-6126

✉ | cn.market@abclonal.com.cn

🌐 | www.abclonal.com.cn

Product Information

Source

Rabbit

Isotype

IgG

Purification

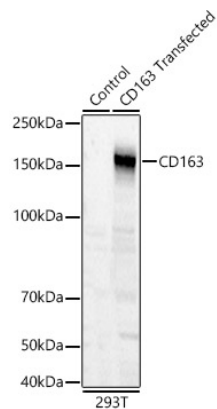
Affinity purification

Storage

Store at -20°C. Avoid freeze / thaw cycles.

Buffer: PBS with 0.05% proclin300, 50% glycerol, pH7.3.

Validation Data



Western blot analysis of lysates from wild type (WT) and 293T cells transfected with CD63 using CD163 Rabbit pAb (A23023) at 1:700 dilution.
Secondary antibody: HRP Goat Anti-Rabbit IgG (H+L) (AS014) at 1:10000 dilution.
Lysates/proteins: 25µg per lane.
Blocking buffer: 3% nonfat dry milk in TBST.
Detection: ECL Basic Kit (RM00020).
Exposure time: 1s.