

IL15 Rabbit mAb

Catalog No.: A23026 **Recombinant**

Basic Information

Observed MW

Refer to figures

Calculated MW

18kDa

Category

Primary antibody

Applications

ELISA, IHC-P

Cross-Reactivity

Human, Mouse, Rat

CloneNo number

ARC53689

Background

The protein encoded by this gene is a cytokine that regulates T and natural killer cell activation and proliferation. This cytokine and interleukine 2 share many biological activities. They are found to bind common hematopoietin receptor subunits, and may compete for the same receptor, and thus negatively regulate each other's activity. The number of CD8+ memory cells is shown to be controlled by a balance between this cytokine and IL2. This cytokine induces the activation of JAK kinases, as well as the phosphorylation and activation of transcription activators STAT3, STAT5, and STAT6. Studies of the mouse counterpart suggested that this cytokine may increase the expression of apoptosis inhibitor BCL2L1/BCL-x(L), possibly through the transcription activation activity of STAT6, and thus prevent apoptosis. Alternatively spliced transcript variants of this gene have been reported.

Recommended Dilutions

IHC-P 1:50 - 1:200

Immunogen Information

Gene ID

3600

Swiss Prot

P40933

Immunogen

Recombinant fusion protein containing a sequence corresponding to amino acids 49-162 of human IL15 (NP_000576.1).

Synonyms

IL-15; IL15

Contact

 | 400-999-6126 | cn.market@abclonal.com.cn | www.abclonal.com.cn

Product Information

Source

Rabbit

Isotype

IgG

Purification

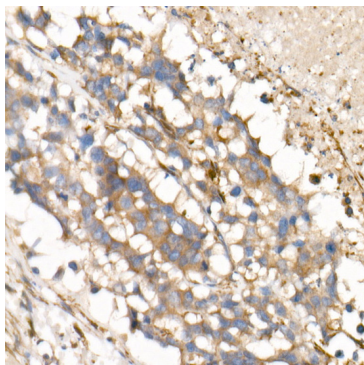
Affinity purification

Storage

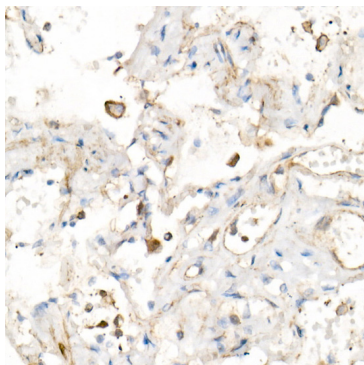
Store at -20°C. Avoid freeze / thaw cycles.

Buffer: PBS with 0.05% proclin300, 50% glycerol, pH7.3.

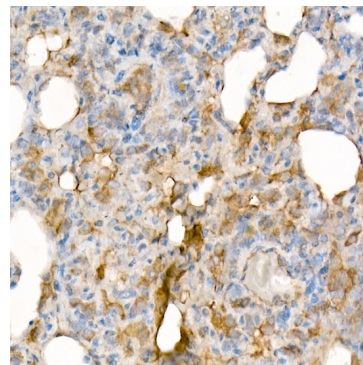
Validation Data



Immunohistochemistry analysis of IL15 in paraffin-embedded human lung cancer using IL15 Rabbit mAb (A23026) at dilution of 1:100 (40x lens). Perform high pressure antigen retrieval with 10 mM citrate buffer pH 6.0 before commencing with IHC staining protocol



Immunohistochemistry analysis of IL15 in paraffin-embedded human lung using IL15 Rabbit mAb(A23026) at dilution of 1:100 (40x lens). Perform high pressure antigen retrieval with 10 mM citrate buffer pH 6.0 before commencing with IHC staining protocol.



Immunohistochemistry analysis of IL15 in paraffin-embedded rat lung using IL15 Rabbit mAb(A23026) at dilution of 1:100 (40x lens). Perform high pressure antigen retrieval with 10 mM citrate buffer pH 6.0 before commencing with IHC staining protocol.