

# BTN2A1 Rabbit mAb

Catalog No.: A23032 **Recombinant**

## Basic Information

### Observed MW

69kDa

### Calculated MW

60kDa

### Category

Primary antibody

### Applications

ELISA, WB

### Cross-Reactivity

Human

### CloneNo number

ARC59656

## Background

This gene encodes a member of the immunoglobulin superfamily. The gene is located in a cluster of butyrophilin-like genes in the juxta-telomeric region of the major histocompatibility complex on chromosome 6. A pseudogene of this gene has been identified in this cluster. The encoded protein is an integral plasma membrane protein involved in lipid, fatty-acid, and sterol metabolism. Alterations in this gene may be associated with several disease states including metabolic syndrome. Multiple alternatively spliced transcript variants encoding different isoforms have been found for this gene.

## Recommended Dilutions

WB 1:1000 - 1:5000

## Immunogen Information

### Gene ID

11120

### Swiss Prot

Q7KYR7

### Immunogen

Recombinant fusion protein containing a sequence corresponding to amino acids 1-100 of human BTN2A1. (NP\_008980.1).

### Synonyms

BTf1; BT2.1; BTN2.1; DJ3E1.1; BK14H9.1; BTN2A1

## Contact

☎ | 400-999-6126

✉ | [cn.market@abclonal.com.cn](mailto:cn.market@abclonal.com.cn)

🌐 | [www.abclonal.com.cn](http://www.abclonal.com.cn)

## Product Information

### Source

Rabbit

### Isotype

IgG

### Purification

Affinity purification

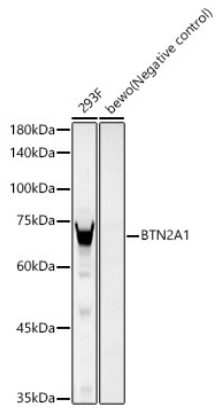
### Storage

Store at -20°C. Avoid freeze / thaw cycles.

Buffer: PBS with 0.05% proclin300, 0.05% BSA, 50% glycerol, pH7.3.

## Validation Data

---



Western blot analysis of various lysates, using BTN2A1 Rabbit mAb (A23032) at 1:2000 dilution.  
Secondary antibody: HRP Goat Anti-Rabbit IgG (H+L) (AS014) at 1:10000 dilution.  
Lysates/proteins: 25µg per lane.  
Blocking buffer: 3% nonfat dry milk in TBST.  
Detection: ECL Basic Kit (RM00020).  
Exposure time: 30s.