

# Lipocalin-2/NGAL Rabbit mAb

Catalog No.: A23033

Recombinant

1 Publications

## Basic Information

### Observed MW

23kDa

### Calculated MW

23kDa

### Category

Primary antibody

### Applications

ELISA, WB

### Cross-Reactivity

Human

### CloneNo number

ARC58965

## Background

This gene encodes a protein that belongs to the lipocalin family. Members of this family transport small hydrophobic molecules such as lipids, steroid hormones and retinoids. The protein encoded by this gene is a neutrophil gelatinase-associated lipocalin and plays a role in innate immunity by limiting bacterial growth as a result of sequestering iron-containing siderophores. The presence of this protein in blood and urine is an early biomarker of acute kidney injury. This protein is thought to be involved in multiple cellular processes, including maintenance of skin homeostasis, and suppression of invasiveness and metastasis. Mice lacking this gene are more susceptible to bacterial infection than wild type mice.

## Recommended Dilutions

WB 1:2000 - 1:6000

## Immunogen Information

### Gene ID

3934

### Swiss Prot

P80188

### Immunogen

Recombinant fusion protein containing a sequence corresponding to amino acids 21-198 of Lipocalin-2/NGAL (NP\_005555.2).

### Synonyms

p25; 24p3; MSFI; NGAL; Lipocalin-2/NGAL

## Contact

 | 400-999-6126 | [cn.market@abclonal.com.cn](mailto:cn.market@abclonal.com.cn) | [www.abclonal.com.cn](http://www.abclonal.com.cn)

## Product Information

### Source

Rabbit

### Isotype

IgG

### Purification

Affinity purification

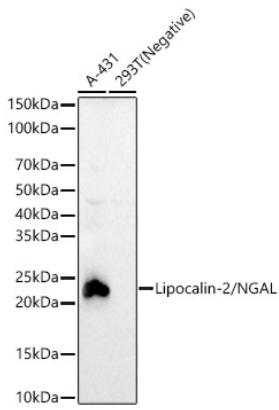
### Storage

Store at -20°C. Avoid freeze / thaw cycles.

Buffer: PBS with 0.05% proclin300, 0.05% BSA, 50% glycerol, pH7.3.

## Validation Data

---



Western blot analysis of various lysates, using Lipocalin-2/NGAL Rabbit mAb (A23033) at 1:5000 dilution.  
Secondary antibody: HRP-conjugated Goat anti-Rabbit IgG (H+L) (AS014) at 1:10000 dilution.  
Lysates/proteins: 25µg per lane.  
Blocking buffer: 3% nonfat dry milk in TBST.  
Detection: ECL Basic Kit (RM00020).  
Exposure time: 60s.