

# Human IgD Rabbit mAb

Catalog No.: A23036 **Recombinant**

## Basic Information

### Observed MW

55kDa

### Calculated MW

42kDa

### Category

Primary antibody

### Applications

ELISA, WB, FC

### Cross-Reactivity

Human

### CloneNo number

ARC60051

## Background

IgD is the major antigen receptor isotype on the surface of most peripheral B-cells, where it is coexpressed with IgM. The membrane-bound IgD (mIgD) induces the phosphorylation of CD79A and CD79B by the Src family of protein tyrosine kinases.

## Recommended Dilutions

**WB** 1:1000 - 1:5000

**FC** 1:500 - 1:1000

## Immunogen Information

### Gene ID

3495

### Swiss Prot

P01880

### Immunogen

Recombinant fusion protein containing a sequence corresponding to amino acids 99-384 of human IgD

### Synonyms

IgD; Human IgD

## Contact

☎ | 400-999-6126

✉ | [cn.market@abclonal.com.cn](mailto:cn.market@abclonal.com.cn)

🌐 | [www.abclonal.com.cn](http://www.abclonal.com.cn)

## Product Information

### Source

Rabbit

### Isotype

IgG

### Purification

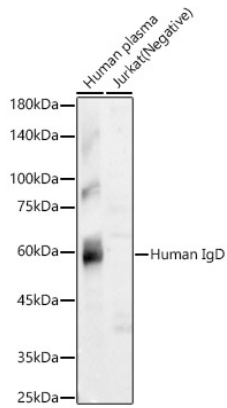
Affinity purification

### Storage

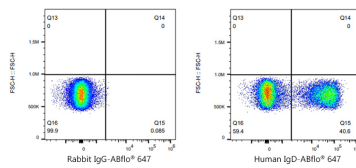
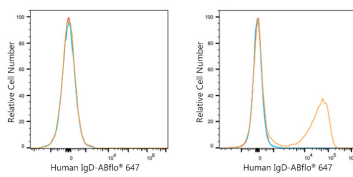
Store at -20°C. Avoid freeze / thaw cycles.

Buffer: PBS with 0.05% proclin300, 0.05% BSA, 50% glycerol, pH7.3.

## Validation Data



Western blot analysis of various lysates using Human IgD Rabbit mAb (A23036) at 1:3000 dilution.  
 Secondary antibody: HRP Goat Anti-Rabbit IgG (H+L) (AS014) at 1:10000 dilution.  
 Lysates/proteins: 25µg per lane.  
 Blocking buffer: 3% nonfat dry milk in TBST.  
 Detection: ECL Basic Kit (RM00020).  
 Exposure time: 180s.



Flow cytometry:  $1 \times 10^6$  Jurkat cells (negative control, left) and Human PBMC (right) were surface-stained with Human IgD Rabbit mAb (A23036, 2 µg/mL, orange line) or ABflo® 647 Rabbit IgG isotype control (A22070, 5 µl/Test, blue line), followed by Alexa Fluor® 647 conjugated goat anti-rabbit pAb staining. Non-fluorescently stained cells were used as blank control (red line).

Flow cytometry:  $1 \times 10^6$  Human PBMC were surface-stained with ABflo® 647 Rabbit IgG isotype control (A22070, 2 µg/mL, left) or Human IgD Rabbit mAb (A23036, 2 µg/mL, right).