

# CD38 Rabbit mAb

Catalog No.: A23037 **Recombinant**

## Basic Information

### Observed MW

52kDa

### Calculated MW

34kDa

### Category

Primary antibody

### Applications

WB,IF/ICC,FC,(ELISA)

### Cross-Reactivity

Mouse

### CloneNo number

ARC59835

## Background

This gene encodes a non-lineage-restricted, type II transmembrane glycoprotein that synthesizes and hydrolyzes cyclic adenosine 5'-diphosphate-ribose, an intracellular calcium ion mobilizing messenger. The release of soluble protein and the ability of membrane-bound protein to become internalized indicate both extracellular and intracellular functions for the protein. This protein has an N-terminal cytoplasmic tail, a single membrane-spanning domain, and a C-terminal extracellular region with four N-glycosylation sites. Knockout mice deficient for this gene display altered humoral immune responses. In addition, knockout mice exhibit higher locomotor activity and defects in nurturing and social behaviors.

## Recommended Dilutions

**WB** 1:500 - 1:1000**IF/ICC** 1:50 - 1:200**FC** 1:500 - 1:1000**ELISA** Recommended starting concentration is 1 µg/mL. Please optimize the concentration based on your specific assay requirements.

## Immunogen Information

### Gene ID

12494

### Swiss Prot

P56528

### Immunogen

Recombinant fusion protein containing a sequence corresponding to amino acids 45-304 of mouse CD38 (NP\_031672.2).

### Synonyms

I-19; ADPRC 1; Cd38-rs1; CD38

## Contact

 | 400-999-6126 | [cn.market@abclonal.com.cn](mailto:cn.market@abclonal.com.cn) | [www.abclonal.com.cn](http://www.abclonal.com.cn)

## Product Information

### Source

Rabbit

### Isotype

IgG

### Purification

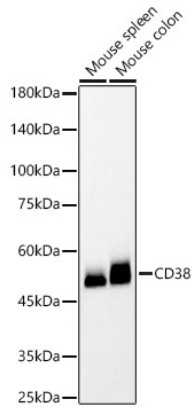
Affinity purification

### Storage

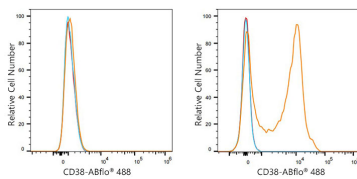
Store at -20°C. Avoid freeze / thaw cycles.

Buffer: PBS with 0.05% proclin300,0.05% BSA,50% glycerol,pH7.3.

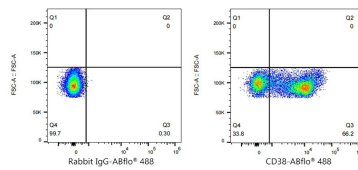
## Validation Data



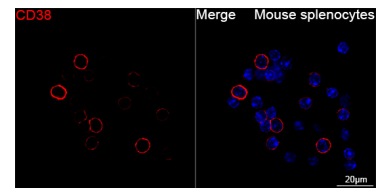
Western blot analysis of various lysates, using CD38 Rabbit mAb (A23037) at 1:1000 dilution. Secondary antibody: HRP-conjugated Goat anti-Rabbit IgG (H+L) (AS014) at 1:10000 dilution. Lysates/proteins: 25µg per lane. Blocking buffer: 3% nonfat dry milk in TBST. Detection: ECL Basic Kit (RM00020). Exposure time: 180s.



Flow cytometry:  $1 \times 10^6$  C2C12 cells (negative control, left) and C57/BL6 splenocytes (right) were surface-stained with CD38 Rabbit mAb (A23037, 2 µg/mL, orange line) or ABflo® 488 Rabbit IgG isotype control (A22069, 2 µg/mL, blue line), followed by FITC conjugated goat anti-Rabbit pAb staining. Non-fluorescently stained cells were used as blank control (red line).



Flow cytometry:  $1 \times 10^6$  C57/BL6 splenocytes cells were surface-stained with ABflo® 488 Rabbit IgG isotype control (A22069, 2 µg/mL, left) or CD38 Rabbit mAb (A23037, 2 µg/mL, right).



Confocal imaging of Mouse splenocytes cells using CD38 Rabbit mAb (A23037, dilution 1:200) followed by a further incubation with Cy3 Goat Anti-Rabbit IgG (H+L) (AS007, dilution 1:500) (Red). DAPI was used for nuclear staining (Blue). Objective: 100x.