

# PD-L2/CD273/B7-DC Rabbit pAb

Catalog No.: A23045

## Basic Information

### Observed MW

45-60kDa

### Calculated MW

28kDa

### Category

Primary antibody

### Applications

WB, ELISA

### Cross-Reactivity

Mouse, Rat

## Background

Acts upstream of or within negative regulation of T cell proliferation and positive regulation of T cell proliferation. Predicted to be located in plasma membrane. Predicted to be integral component of membrane. Predicted to be active in external side of plasma membrane. Is expressed in several structures, including alimentary system epithelium; forebrain; nose; retina; and skin. Orthologous to human PDCD1LG2 (programmed cell death 1 ligand 2).

## Recommended Dilutions

**WB** 1:500 - 1:1000

**ELISA** Recommended starting concentration is 1 µg/mL. Please optimize the concentration based on your specific assay requirements.

## Immunogen Information

### Gene ID

58205

### Swiss Prot

Q9WUL5

### Immunogen

Recombinant protein (or fragment). This information is considered to be commercially sensitive.

### Synonyms

Btdc; B7-DC; PD-L2; F730015022Rik; PD-L2/CD273/B7-DC

## Contact

☎ | 400-999-6126

✉ | [cn.market@abclonal.com.cn](mailto:cn.market@abclonal.com.cn)

🌐 | [www.abclonal.com.cn](http://www.abclonal.com.cn)

## Product Information

### Source

Rabbit

### Isotype

IgG

### Purification

Affinity purification

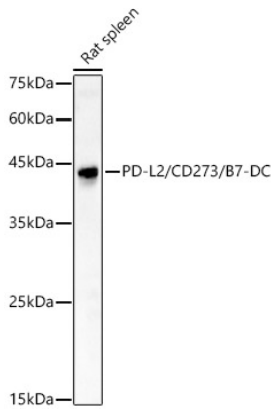
### Storage

Store at -20°C. Avoid freeze / thaw cycles.

Buffer: PBS containing 50% glycerol, preserved with proclin300 or sodium azide (as specified on the Certificate of Analysis), pH 7.3.

## Validation Data

---



Western blot analysis of lysates from Rat spleen, using PD-L2/CD273/B7-DC Rabbit pAb (A23045) at 1:600 dilution.

Secondary antibody: HRP-conjugated Goat anti-Rabbit IgG (H+L) (AS014) at 1:10000 dilution.

Lysates/proteins: 25µg per lane.

Blocking buffer: 3% nonfat dry milk in TBST.

Detection: ECL Basic Kit (RM00020).

Exposure time: 60s.