

OXR1 Rabbit pAb

Catalog No.: A23047

Basic Information

Observed MW

139kDa

Calculated MW

98kDa

Category

Primary antibody

Applications

WB, ELISA

Cross-Reactivity

Human, Mouse, Rat

Background

Predicted to enable oxidoreductase activity. Predicted to be involved in response to oxidative stress. Predicted to act upstream of or within several processes, including adult walking behavior; negative regulation of neuron death; and negative regulation of peptidyl-cysteine S-nitrosylation. Predicted to be located in mitochondrion and nucleolus. Predicted to be active in nucleus. Implicated in cerebellar hypoplasia/atrophy, epilepsy, and global developmental delay.

Recommended Dilutions

WB 1:500 - 1:1000

ELISA Recommended starting concentration is 1 µg/mL. Please optimize the concentration based on your specific assay requirements.

Immunogen Information

Gene ID

55074

Swiss Prot

Q8N573

Immunogen

Recombinant protein (or fragment). This information is considered to be commercially sensitive.

Synonyms

TLDC3; CHEGDD; Nbla00307; OXR1

Contact

☎ | 400-999-6126

✉ | cn.market@abclonal.com.cn

🌐 | www.abclonal.com.cn

Product Information

Source

Rabbit

Isotype

IgG

Purification

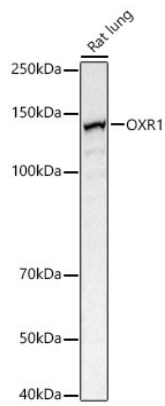
Affinity purification

Storage

Store at -20°C. Avoid freeze / thaw cycles.

Buffer: PBS containing 50% glycerol, preserved with proclin300 or sodium azide (as specified on the Certificate of Analysis), pH 7.3.

Validation Data



Western blot analysis of lysates from Rat lung using OXR1 Rabbit pAb (A23047) at 1:700 dilution.
Secondary antibody: HRP-conjugated Goat anti-Rabbit IgG (H+L) (AS014) at 1:10000 dilution.
Lysates/proteins: 25 µg per lane.
Blocking buffer: 3% nonfat dry milk in TBST.
Detection: ECL Basic Kit (RM00020).
Exposure time: 1s.