

CD200 Rabbit pAb

Catalog No.: A23050

Basic Information

Observed MW

45-50kDa

Calculated MW

31kDa

Category

Primary antibody

Applications

WB, ELISA

Cross-Reactivity

Mouse, Rat

Background

Predicted to enable protein binding activity involved in heterotypic cell-cell adhesion. Involved in negative regulation of cell population proliferation; negative regulation of macrophage activation; and negative regulation of neuroinflammatory response. Located in cell surface. Is expressed in several structures, including anterior nares; aorta; bone; nervous system; and retina. Used to study autoimmune disease. Orthologous to human CD200 (CD200 molecule).

Recommended Dilutions

WB 1:500 - 1:1000

ELISA Recommended starting concentration is 1 µg/mL. Please optimize the concentration based on your specific assay requirements.

Immunogen Information

Gene ID

17470

Swiss Prot

O54901

Immunogen

Recombinant protein (or fragment). This information is considered to be commercially sensitive.

Synonyms

OX2; Mox2; CD200

Contact

☎ | 400-999-6126

✉ | cn.market@abclonal.com.cn

🌐 | www.abclonal.com.cn

Product Information

Source

Rabbit

Isotype

IgG

Purification

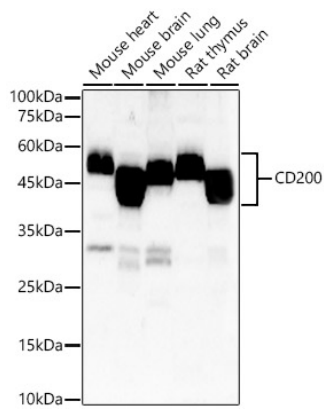
Affinity purification

Storage

Store at -20°C. Avoid freeze / thaw cycles.

Buffer: PBS containing 50% glycerol, preserved with proclin300 or sodium azide (as specified on the Certificate of Analysis), pH 7.3.

Validation Data



Western blot analysis of various lysates, using CD200 Rabbit pAb (A23050) at 1:700 dilution.
Secondary antibody: HRP-conjugated Goat anti-Rabbit IgG (H+L) (AS014) at 1:10000 dilution.
Lysates/proteins: 25 μ g per lane.
Blocking buffer: 3% nonfat dry milk in TBST.
Detection: ECL Basic Kit (RM00020).
Exposure time: 180s.