

CD103 Rabbit pAb

Catalog No.: A23053

Basic Information

Observed MW

150kDa

Calculated MW

129kDa

Category

Primary antibody

Applications

ELISA, WB

Cross-Reactivity

Mouse

Background

Predicted to enable metal ion binding activity. Predicted to act upstream of or within cell adhesion and integrin-mediated signaling pathway. Located in external side of plasma membrane. Is expressed in several structures, including alimentary system; genitourinary system; lymph node; nasal septum; and nucleus pulposus. Orthologous to human ITGAE (integrin subunit alpha E).

Recommended Dilutions

WB 1:500 - 1:2000

Immunogen Information

Gene ID

16407

Swiss Prot

Q60677

Immunogen

Recombinant fusion protein containing a sequence corresponding to amino acids 191-385 of mouse CD103. (NP_032425.2).

Synonyms

CD103; aM290; alpha-E1; A530055J10; alpha-M290

Contact

 | 400-999-6126

 | cn.market@abclonal.com.cn

 | www.abclonal.com.cn

Product Information

Source

Rabbit

Isotype

IgG

Purification

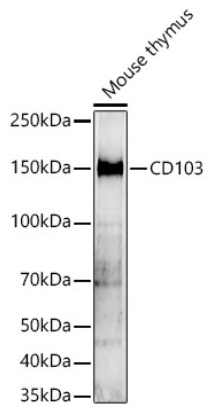
Affinity purification

Storage

Store at -20°C. Avoid freeze / thaw cycles.

Buffer: PBS with 0.05% proclin300, 50% glycerol, pH7.3.

Validation Data



Western blot analysis of lysates from Mouse thymus, using CD103 Rabbit pAb (A23053) at 1:900 dilution.
Secondary antibody: HRP Goat Anti-Rabbit IgG (H+L) (AS014) at 1:10000 dilution.
Lysates/proteins: 25ug per lane.
Blocking buffer: 3% nonfat dry milk in TBST.
Detection: ECL Enhanced Kit (RM00021).
Exposure time: 30s.