

CD44 Rabbit pAb

Catalog No.: A23055 **1 Publications**

Basic Information

Observed MW

80-95kDa

Calculated MW

86kDa

Category

Primary antibody

Applications

ELISA, WB, IF/ICC

Cross-Reactivity

Human, Mouse, Rat

Background

Enables hyaluronic acid binding activity and type II transforming growth factor beta receptor binding activity. Contributes to cytokine binding activity and cytokine receptor activity. Involved in several processes, including negative regulation of T cell activation; positive regulation of protein phosphorylation; and regulation of intracellular signal transduction. Acts upstream of or within several processes, including Wnt signaling pathway; morphogenesis of a branching epithelium; and wound healing involved in inflammatory response. Located in basolateral plasma membrane; external side of plasma membrane; and microvillus. Part of macrophage migration inhibitory factor receptor complex. Is expressed in several structures, including alimentary system; branchial arch; central nervous system; genitourinary system; and limb. Human ortholog(s) of this gene implicated in breast carcinoma (multiple); carcinoma (multiple); and prostate cancer. Orthologous to human CD44 (CD44 molecule (Indian blood group)).

Recommended Dilutions

WB 1:100 - 1:500**IF/ICC** 1:20 - 1:200

Immunogen Information

Gene ID

12505

Swiss Prot

P15379

Immunogen

Recombinant fusion protein containing a sequence corresponding to amino acids 23-176 of mouse CD44. (NP_033981.2).

Synonyms

Ly-24; Pgp-1; HERMES; CD44

Contact

 | 400-999-6126 | cn.market@abclonal.com.cn | www.abclonal.com.cn

Product Information

Source

Rabbit

Isotype

IgG

Purification

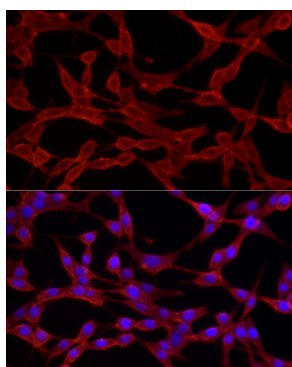
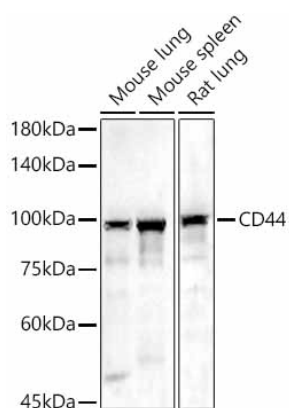
Affinity purification

Storage

Store at -20°C. Avoid freeze / thaw cycles.

Buffer: PBS with 0.05% proclin300, 50% glycerol, pH7.3.

Validation Data



Immunofluorescence analysis of NIH/3T3 cells using CD44 Rabbit pAb (A23055) at dilution of 1:20 (40x lens). Secondary antibody: Cy3 Goat Anti-Rabbit IgG (H+L) (AS007) at 1:500 dilution. Blue: DAPI for nuclear staining.