

RYR1 Rabbit pAb

Catalog No.: A23056

Basic Information

Observed MW

565kDa

Calculated MW

565kDa

Category

Primary antibody

Applications

WB, ELISA

Cross-Reactivity

Mouse

Background

This gene encodes a ryanodine receptor found in skeletal muscle. The encoded protein functions as a calcium release channel in the sarcoplasmic reticulum but also serves to connect the sarcoplasmic reticulum and transverse tubule. Mutations in this gene are associated with malignant hyperthermia susceptibility, central core disease, and minicore myopathy with external ophthalmoplegia. Alternatively spliced transcripts encoding different isoforms have been described.

Recommended Dilutions

WB 1:1000 - 1:5000

ELISA Recommended starting concentration is 1 µg/mL. Please optimize the concentration based on your specific assay requirements.

Immunogen Information

Gene ID

6261

Swiss Prot

P21817

Immunogen

Synthetic peptide. This information is considered to be commercially sensitive.

Synonyms

CCO; KDS; MHS; RYR; MHS1; RYDR; SKRR; RYR-1; CMYP1A; CMYP1B; PPP1R137; RYR1

Contact

☎ | 400-999-6126

✉ | cn.market@abclonal.com.cn

🌐 | www.abclonal.com.cn

Product Information

Source

Rabbit

Isotype

IgG

Purification

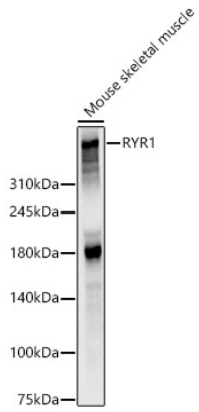
Affinity purification

Storage

Store at -20°C. Avoid freeze / thaw cycles.

Buffer: PBS containing 50% glycerol, preserved with proclin300 or sodium azide (as specified on the Certificate of Analysis), pH 7.3.

Validation Data



Western blot analysis of lysates from Mouse skeletal muscle, using RYR1 Rabbit pAb (A23056) at 1:2000 dilution.

Secondary antibody: HRP-conjugated Goat anti-Rabbit IgG (H+L) (AS014) at 1:10000 dilution.

Lysates/proteins: 25µg per lane.

Blocking buffer: 3% nonfat dry milk in TBST.

Detection: ECL Basic Kit (RM00020).

Exposure time: 30s.