

FPR2 Rabbit pAb

Catalog No.: A23059

Basic Information

Observed MW

Refer to figures

Calculated MW

39kDa

Category

Primary antibody

Applications

IF/ICC,ELISA

Cross-Reactivity

Human, Mouse, Rat

Background

Enables amyloid-beta binding activity; scavenger receptor binding activity; and signaling receptor activity. Involved in several processes, including cellular response to amyloid-beta; positive regulation of monocyte chemotaxis; and regulation of defense response. Located in cytoplasm and plasma membrane.

Recommended Dilutions

IF/ICC 1:50 - 1:200

ELISA Recommended starting concentration is 1 µg/mL. Please optimize the concentration based on your specific assay requirements.

Immunogen Information

Gene ID

2358

Swiss Prot

P25090

Immunogen

Recombinant protein (or fragment). This information is considered to be commercially sensitive.

Synonyms

ALX; ALXR; HM63; FMLPX; FPR2A; FPRH1; FPRH2; FPRL1; LXA4R; FMLP-R-II; FPR2

Contact

☎ | 400-999-6126

✉ | cn.market@abclonal.com.cn

🌐 | www.abclonal.com.cn

Product Information

Source

Rabbit

Isotype

IgG

Purification

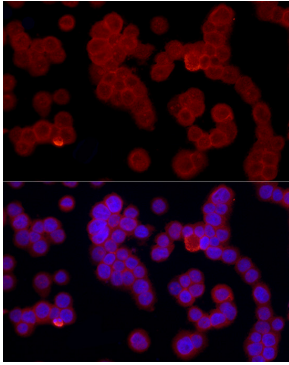
Affinity purification

Storage

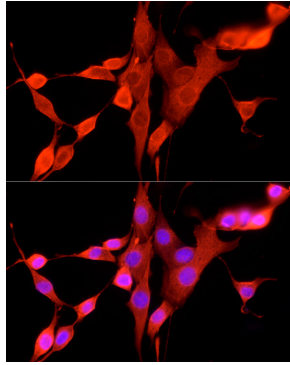
Store at -20°C. Avoid freeze / thaw cycles.

Buffer: PBS containing 50% glycerol, preserved with proclin300 or sodium azide (as specified on the Certificate of Analysis), pH 7.3.

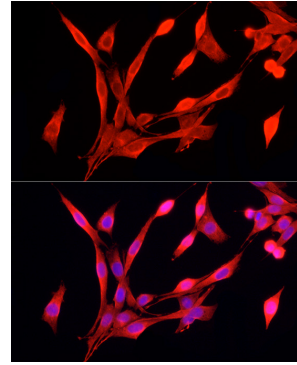
Validation Data



Immunofluorescence analysis of HL-60 cells using FPR2 Rabbit pAb (A23059) at dilution of 1:50 (40x lens). Secondary antibody: Cy3-conjugated Goat anti-Rabbit IgG (H+L) (AS007) at 1:500 dilution. Blue: DAPI for nuclear staining.



Immunofluorescence analysis of NIH/3T3 cells using FPR2 Rabbit pAb (A23059) at dilution of 1:50 (40x lens). Secondary antibody: Cy3-conjugated Goat anti-Rabbit IgG (H+L) (AS007) at 1:500 dilution. Blue: DAPI for nuclear staining.



Immunofluorescence analysis of PC-12 cells using FPR2 Rabbit pAb (A23059) at dilution of 1:50 (40x lens). Secondary antibody: Cy3-conjugated Goat anti-Rabbit IgG (H+L) (AS007) at 1:500 dilution. Blue: DAPI for nuclear staining.