

Engrailed 1 Rabbit pAb

Catalog No.: A23060

Basic Information

Observed MW

Refer to figures

Calculated MW

40kDa

Category

Primary antibody

Applications

IF/ICC,ELISA

Cross-Reactivity

Human, Mouse, Rat

Background

Homeobox-containing genes are thought to have a role in controlling development. In *Drosophila*, the 'engrailed' (en) gene plays an important role during development in segmentation, where it is required for the formation of posterior compartments. Different mutations in the mouse homologs, En1 and En2, produced different developmental defects that frequently are lethal. The human engrailed homologs 1 and 2 encode homeodomain-containing proteins and have been implicated in the control of pattern formation during development of the central nervous system.

Recommended Dilutions

IF/ICC 1:50 - 1:200

ELISA Recommended starting concentration is 1 µg/mL. Please optimize the concentration based on your specific assay requirements.

Immunogen Information

Gene ID

2019

Swiss Prot

Q05925

Immunogen

This information is considered to be commercially sensitive.

Synonyms

ENDOVESLB; Engrailed 1

Contact

☎ | 400-999-6126

✉ | cn.market@abclonal.com.cn

🌐 | www.abclonal.com.cn

Product Information

Source

Rabbit

Isotype

IgG

Purification

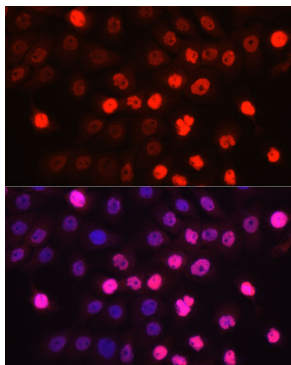
Affinity purification

Storage

Store at -20°C. Avoid freeze / thaw cycles.

Buffer: PBS, pH 7.3, containing 50% glycerol. Preserved with Proclin300 or sodium azide. May contain 0.05% BSA as specified on the Certificate of Analysis.

Validation Data



Immunofluorescence analysis of A-431 cells using Engrailed 1 Rabbit pAb (A23060) at dilution of 1:100 (40x lens). Secondary antibody: Cy3-conjugated Goat anti-Rabbit IgG (H+L) (AS007) at 1:500 dilution. Blue: DAPI for nuclear staining.