

# CACNA1S Rabbit pAb

Catalog No.: A23062

## Basic Information

### Observed MW

Refer to figures

### Calculated MW

212kDa

### Category

Primary antibody

### Applications

IF-P, ELISA

### Cross-Reactivity

Mouse, Rat

## Background

This gene encodes one of the five subunits of the slowly inactivating L-type voltage-dependent calcium channel in skeletal muscle cells. Mutations in this gene have been associated with hypokalemic periodic paralysis, thyrotoxic periodic paralysis and malignant hyperthermia susceptibility.

## Recommended Dilutions

**IF-P** 1:50 - 1:200

**ELISA** Recommended starting concentration is 1 µg/mL. Please optimize the concentration based on your specific assay requirements.

## Immunogen Information

### Gene ID

779

### Swiss Prot

Q13698

### Immunogen

Recombinant protein (or fragment). This information is considered to be commercially sensitive.

### Synonyms

MHS5; DHPRM; HOKPP; TTPP1; CMYP18; Cav1.1; HOKPP1; hypoPP; CCHL1A3; CACNL1A3; CACNA1S

## Contact

 | 400-999-6126

 | [cn.market@abclonal.com.cn](mailto:cn.market@abclonal.com.cn)

 | [www.abclonal.com.cn](http://www.abclonal.com.cn)

## Product Information

### Source

Rabbit

### Isotype

IgG

### Purification

Affinity purification

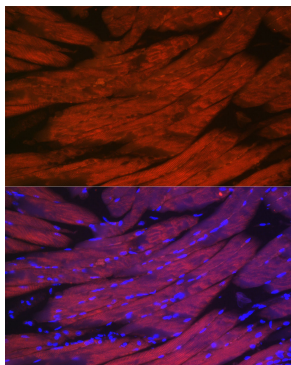
### Storage

Store at -20°C. Avoid freeze / thaw cycles.

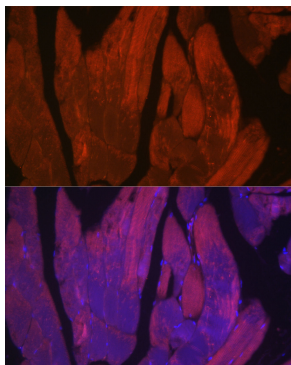
Buffer: PBS with 0.05% proclin300, 50% glycerol, pH7.3.

## Validation Data

---



Immunofluorescence analysis of paraffin-embedded mouse skeletal muscle using CACNA1S Rabbit pAb (A23062) at dilution of 1:50 (40x lens). Secondary antibody: Cy3-conjugated Goat anti-Rabbit IgG (H+L) (AS007) at 1:500 dilution. Blue: DAPI for nuclear staining.



Immunofluorescence analysis of paraffin-embedded rat skeletal muscle using CACNA1S Rabbit pAb (A23062) at dilution of 1:50 (40x lens). Secondary antibody: Cy3-conjugated Goat anti-Rabbit IgG (H+L) (AS007) at 1:500 dilution. Blue: DAPI for nuclear staining.