

[KD Validated] ME1 Rabbit pAb

Catalog No.: A23068

Basic Information

Observed MW

64kDa

Calculated MW

64kDa

Category

Primary antibody

Applications

ELISA, WB

Cross-Reactivity

Human, Mouse, Rat

Background

This gene encodes a cytosolic, NADP-dependent enzyme that generates NADPH for fatty acid biosynthesis. The activity of this enzyme, the reversible oxidative decarboxylation of malate, links the glycolytic and citric acid cycles. The regulation of expression for this gene is complex. Increased expression can result from elevated levels of thyroid hormones or by higher proportions of carbohydrates in the diet.

Recommended Dilutions

WB 1:100 - 1:500

Immunogen Information

Gene ID

4199

Swiss Prot

P48163

Immunogen

Recombinant fusion protein containing a sequence corresponding to amino acids 472-572 of human ME1. (NP_002386.1).

Synonyms

MES; HUMNDME; [KD Validated] ME1

Contact

☎ | 400-999-6126

✉ | cn.market@abclonal.com.cn

🌐 | www.abclonal.com.cn

Product Information

Source

Rabbit

Isotype

IgG

Purification

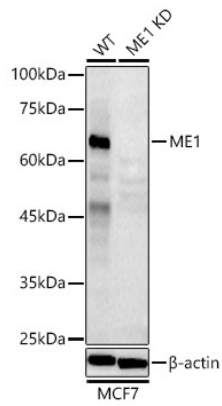
Affinity purification

Storage

Store at -20°C. Avoid freeze / thaw cycles.

Buffer: PBS with 0.05% proclin300, 50% glycerol, pH7.3.

Validation Data



Western blot analysis of lysates from wild type (WT) and ME1 knockdown (KD) MCF7 cells, using [KD Validated] ME1 Rabbit pAb (A23068) at 1:400 dilution.

Secondary antibody: HRP Goat Anti-Rabbit IgG (H+L) (AS014) at 1:10000 dilution.

Lysates/proteins: 25µg per lane.

Blocking buffer: 3% nonfat dry milk in TBST.

Detection: ECL Basic Kit (RM00020).

Exposure time: 90s.