

# Cleaved GSDME (N Terminal) Rabbit mAb

Catalog No.: A23072 **Recombinant** **1 Publications**

## Basic Information

### Observed MW

32kDa

### Calculated MW

55kDa

### Category

Primary antibody

### Applications

ELISA, WB

### Cross-Reactivity

Human

### CloneNo number

ARC56582

## Background

Hearing impairment is a heterogeneous condition with over 40 loci described. The protein encoded by this gene is expressed in fetal cochlea, however, its function is not known. Nonsyndromic hearing impairment is associated with a mutation in this gene. Three transcript variants encoding two different isoforms have been found for this gene.

## Recommended Dilutions

**WB** 1:500 - 1:1000

## Immunogen Information

### Gene ID

1687

### Swiss Prot

O60443

### Immunogen

A synthetic peptide corresponding to a sequence within amino acids 200-300 of human Cleaved GSDME (N Terminal)(NP\_004394.1).

### Synonyms

DFNA5; ICERE-1; Cleaved GSDME (N Terminal)

## Contact

 | 400-999-6126

 | [cn.market@abclonal.com.cn](mailto:cn.market@abclonal.com.cn)

 | [www.abclonal.com.cn](http://www.abclonal.com.cn)

## Product Information

### Source

Rabbit

### Isotype

IgG

### Purification

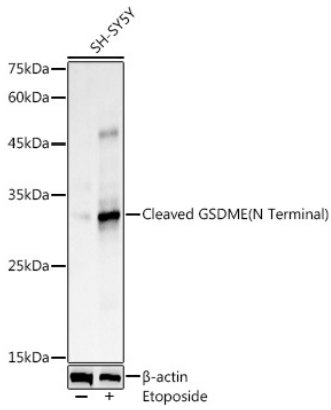
Affinity purification

### Storage

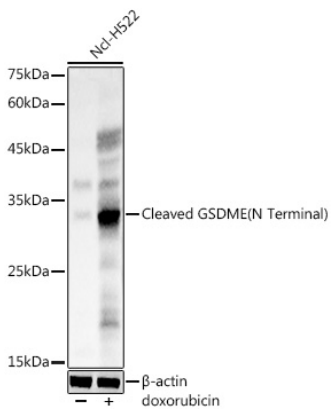
Store at -20°C. Avoid freeze / thaw cycles.

Buffer: PBS with 0.05% proclin300, 0.05% BSA, 50% glycerol, pH7.3.

## Validation Data



Western blot analysis of lysates from SH-SY5Y cells, using Cleaved GSDME (N Terminal) Rabbit mAb (A23072) at 1:1000 dilution. SH-SY5Y cells were treated by Etoposide (25  $\mu$ M) at 37°C for 5 hours. Secondary antibody: HRP-conjugated Goat anti-Rabbit IgG (H+L) (AS014) at 1:10000 dilution. Lysates/proteins: 25 $\mu$ g per lane. Blocking buffer: 3% nonfat dry milk in TBST. Detection: ECL Basic Kit (RM00020). Exposure time: 3s.



Western blot analysis of lysates from Ncl-H522 cells, using Cleaved GSDME (N Terminal) Rabbit mAb (A23072) at 1:1000 dilution. Ncl-H522 cells were treated by Doxorubicin (0.5  $\mu$ M) at 37°C for 24 hours. Secondary antibody: HRP-conjugated Goat anti-Rabbit IgG (H+L) (AS014) at 1:10000 dilution. Lysates/proteins: 25 $\mu$ g per lane. Blocking buffer: 3% nonfat dry milk in TBST. Detection: ECL Basic Kit (RM00020). Exposure time: 3s.