

Mouse IgM Rabbit mAb

Catalog No.: A23073 **Recombinant**

Basic Information

Observed MW

77kDa

Calculated MW

50kDa

Category

Primary antibody

Applications

ELISA, WB, IHC-P, IF/ICC

Cross-Reactivity

Mouse, Rat

CloneNo number

ARC58902

Background

Recommended Dilutions

WB	1:2000 - 1:4000
IHC-P	1:100 - 1:500
IF/ICC	1:100 - 1:500

Immunogen Information

Gene ID

Swiss Prot

P01872

Immunogen

Recombinant fusion protein containing a sequence corresponding to amino acids 105-454 of mouse Ighm (P01872).

Synonyms

Contact

 | 400-999-6126

 | cn.market@abclonal.com.cn

 | www.abclonal.com.cn

Product Information

Source

Rabbit

Isotype

IgG

Purification

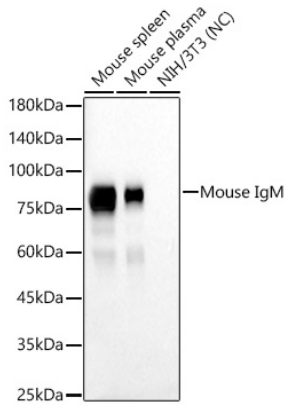
Affinity purification

Storage

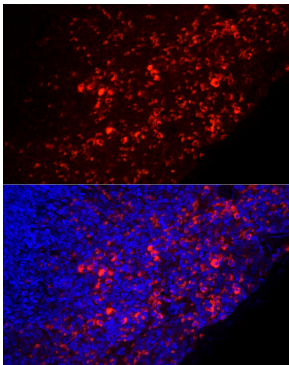
Store at -20°C. Avoid freeze / thaw cycles.

Buffer: PBS with 0.05% proclin300, 0.05% BSA, 50% glycerol, pH7.3.

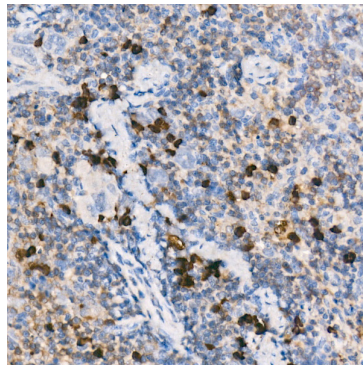
Validation Data



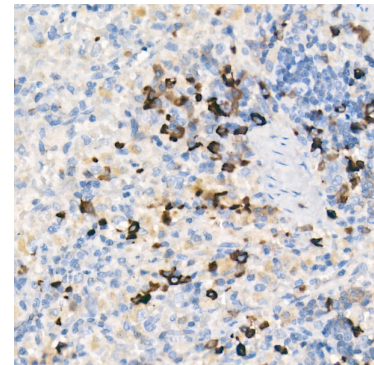
Western blot analysis of various lysates using Mouse IgM Rabbit mAb (A23073) at 1:4000 dilution. Secondary antibody: HRP Goat Anti-Rabbit IgG (H+L) (AS014) at 1:10000 dilution. Lysates/proteins: 25µg per lane. Blocking buffer: 3% nonfat dry milk in TBST. Detection: ECL Basic Kit (RM00020). Negative control (NC): NIH/3T3. Exposure time: 30s.



Immunofluorescence analysis of paraffin-embedded mouse spleen using Mouse IgM Rabbit mAb (A23073) at dilution of 1:300 (40x lens). Secondary antibody: Cy3 Goat Anti-Rabbit IgG (H+L) (AS007) at 1:500 dilution. Blue: DAPI for nuclear staining. Perform high pressure antigen retrieval with 10 mM citrate buffer pH 6.0 before commencing with IF staining protocol.



Immunohistochemistry analysis of paraffin-embedded mouse spleen using Mouse IgM Rabbit mAb (A23073) at dilution of 1:400 (40x lens). Perform high pressure antigen retrieval with 10 mM citrate buffer pH 6.0 before commencing with IHC staining protocol.



Immunohistochemistry analysis of paraffin-embedded rat spleen using Mouse IgM Rabbit mAb (A23073) at dilution of 1:400 (40x lens). Perform high pressure antigen retrieval with 10 mM citrate buffer pH 6.0 before commencing with IHC staining protocol.