

# LOXL1 Rabbit mAb

Catalog No.: A23079 **Recombinant**

## Basic Information

**Observed MW**

63kDa

**Calculated MW**

63kDa

**Category**

Primary antibody

**Applications**

ELISA,WB

**Cross-Reactivity**

Human

**CloneNo number**

ARC58135

## Background

This gene encodes a member of the lysyl oxidase family of proteins. The prototypic member of the family is essential to the biogenesis of connective tissue, encoding an extracellular copper-dependent amine oxidase that catalyzes the first step in the formation of crosslinks in collagen and elastin. The encoded preproprotein is proteolytically processed to generate the mature enzyme. A highly conserved amino acid sequence at the C-terminus end appears to be sufficient for amine oxidase activity, suggesting that each family member may retain this function. The N-terminus is poorly conserved and may impart additional roles in developmental regulation, senescence, tumor suppression, cell growth control, and chemotaxis to each member of the family. Mutations in this gene are associated with exfoliation syndrome.

## Recommended Dilutions

WB 1:500 - 1:1000

## Immunogen Information

**Gene ID**

4016

**Swiss Prot**

Q08397

**Immunogen**

Recombinant fusion protein containing a sequence corresponding to amino acids 95-370 of human LOXL1. (NP\_005567.2).

**Synonyms**

LOL; LOXL; LOXL1

## Contact

 | 400-999-6126 | [cn.market@abclonal.com.cn](mailto:cn.market@abclonal.com.cn) | [www.abclonal.com.cn](http://www.abclonal.com.cn)

## Product Information

**Source**

Rabbit

**Isotype**

IgG

**Purification**

Affinity purification

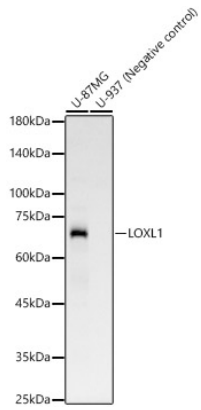
**Storage**

Store at -20°C. Avoid freeze / thaw cycles.

Buffer: PBS with 0.05% proclin300,0.05% BSA,50% glycerol,pH7.3.

## Validation Data

---



Western blot analysis of various lysates, using LOXL1 Rabbit mAb (A23079) at 1:1000 dilution.  
Secondary antibody: HRP Goat Anti-Rabbit IgG (H+L) (AS014) at 1:10000 dilution.  
Lysates/proteins: 25µg per lane.  
Blocking buffer: 3% nonfat dry milk in TBST.  
Detection: ECL Basic Kit (RM00020).  
Exposure time: 90s.