

ABflo® 488 Rabbit anti-Human B7-H2/CD275 mAb

Catalog No.: A23103

Basic Information

Observed MW

Calculated MW

20kDa/33kDa/34kDa

Category

Primary antibody

Applications

FC

Cross-Reactivity

Human

CloneNo number

ARC58551-ABf488

Conjugate

ABflo® 488. Ex:491nm. Em:516nm.

Background

Enables identical protein binding activity. Predicted to be involved in T cell receptor signaling pathway and positive regulation of interleukin-4 production. Located in cytoplasmic ribonucleoprotein granule and plasma membrane.

Recommended Dilutions

FC 5 µl per 10⁶ cells in
100 µl volume

Immunogen Information

Gene ID

23308

Swiss Prot

O75144

Immunogen

Recombinant fusion protein containing a sequence corresponding to amino acids 19-256 of human B7-H2/CD275 (NP_056074.1).

Synonyms

B7h; B7H2; GL50; B7-H2; B7RP1; CD275; ICOSL; LICOS; B7RP-1; ICOS-L

Contact

☎ | 400-999-6126

✉ | cn.market@abclonal.com.cn

🌐 | www.abclonal.com.cn

Product Information

Source

Rabbit

Isotype

IgG

Purification

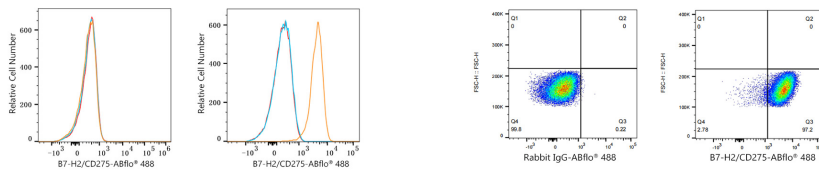
Affinity purification

Storage

Store at 2-8°C. Avoid freeze.

Buffer: PBS with 0.03% proclin300,0.2% BSA,pH7.3.

Validation Data



Flow cytometry: 1×10^6 SH-SY5Y cells (negative control, Left) and Daudi cells (Right) were surface-stained with ABflo® 488 Rabbit anti-Human B7-H2/CD275 mAb (A23103, 5 μ l/Test, orange line) or ABflo® 488 Rabbit IgG isotype control (A22069, 5 μ l/Test, blue line). Non-fluorescently stained cells were used as blank control (red line).

Flow cytometry: 1×10^6 Daudi cells were surface-stained with ABflo® 488 Rabbit IgG isotype control (A22069, 5 μ l/Test, left) or ABflo® 488 Rabbit anti-Human B7-H2/CD275 mAb (A23103, 5 μ l/Test, right).