

# ABflo® 488 Rabbit anti-Human CD371/CLEC12A mAb

Catalog No.: A23105

## Basic Information

### Observed MW

### Calculated MW

8kDa/24kDa/27kDa/30kDa/32kDa

### Category

Primary antibody

### Applications

FC

### Cross-Reactivity

Human

### CloneNo number

ARC55557

### Conjugate

ABflo® 488. Ex:491nm. Em:516nm.

## Recommended Dilutions

FC 5 µl per 10<sup>6</sup> cells in  
100 µl volume

## Background

This gene encodes a member of the C-type lectin/C-type lectin-like domain (CTL/CTLD) superfamily. Members of this family share a common protein fold and have diverse functions, such as cell adhesion, cell-cell signaling, glycoprotein turnover, and roles in inflammation and immune response. The protein encoded by this gene is a negative regulator of granulocyte and monocyte function. Several alternatively spliced transcript variants of this gene have been described, but the full-length nature of some of these variants has not been determined. This gene is closely linked to other CTL/CTLD superfamily members in the natural killer gene complex region on chromosome 12p13.

## Immunogen Information

### Gene ID

160364

### Swiss Prot

Q5QGZ9-2

### Immunogen

Recombinant protein (or fragment). This information is considered to be commercially sensitive.

### Synonyms

CLL1; MICL; CD371; CLL-1; DCAL-2

## Contact

☎ | 400-999-6126

✉ | [cn.market@abclonal.com.cn](mailto:cn.market@abclonal.com.cn)

🌐 | [www.abclonal.com.cn](http://www.abclonal.com.cn)

## Product Information

### Source

Rabbit

### Isotype

IgG

### Purification

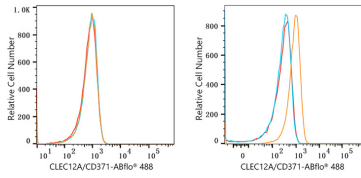
Affinity purification

### Storage

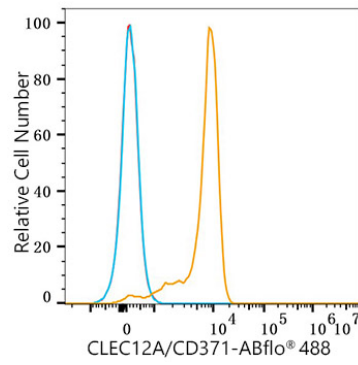
Store at 2-8°C. Avoid freeze.

Buffer: PBS containing 0.2% BSA, preserved with proclin300 or sodium azide (as specified on the Certificate of Analysis), pH 7.3.

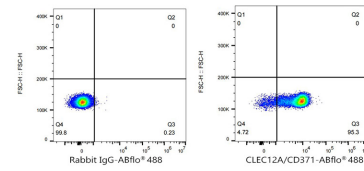
## Validation Data



Flow cytometry: 1X10<sup>6</sup> K-562 cells (negative control, Left) and U-937 cells (Right) were surface-stained with ABflo® 488 Rabbit anti-Human CLEC12A/CD371 mAb (A23105, 5 µl/Test, orange line) or ABflo® 488 Rabbit IgG isotype control (A22069, 5 µl/Test, blue line). Non-fluorescently stained cells were used as blank control (red line).



Flow cytometry: 1X10<sup>6</sup> Human PBMC were surface-stained with ABflo® 488 Rabbit anti-Human CLEC12A/CD371 mAb (A23105, 5 µl/Test, orange line) or ABflo® 488 Rabbit IgG isotype control (A22069, 5 µl/Test, blue line). Non-fluorescently stained cells were used as blank control (red line).



Flow cytometry: 1X10<sup>6</sup> Human PBMC were surface-stained with ABflo® 488 Rabbit IgG isotype control (A22069, 5 µl/Test, left) or ABflo® 488 Rabbit anti-Human CLEC12A/CD371 mAb (A23105, 5 µl/Test, right).